



Contents

Product Features

- Product Features 01
- Model Description 02
- List of Refrigeration Capacity 03
- Summary of Medium Temperature Unit Configuration 18
- Summary of Low-temperature Unit Configuration 22
- Summary of Variable Frequency Unit Configuration 28
- Summary of Built-in Unit Configuration 30
- Medium and Low Temperature Variable Frequency Outdoor Condensing Unit 34

Lower energy consumption

- Panasonic high efficiency scroll compressor for fresh food;
- Microcomputer control system, more precise control of system start and stop, reducing low operating conditions and improving operational efficiency;
- Optimize condenser heat transfer efficiency and increase COP value

Low noise

- Optimize the fan design and choose a low-noise fan to control the overall noise below 58 decibels
- Optimize compressor design to reduce annoying high-frequency sound waves

High ambient temperature applicable

- Optimize the design of condenser fin coils to improve heat transfer efficiency
- Optimize fan design to reduce noise while increasing heat transfer airflow
- The maximum operating ambient temperature can reach 48 °C

Easy to use and repair

- Wide evaporation temperature range: +10 ~ -40°C
- Easy installation without need for rain protection
- Reduce threaded interfaces and leakage rates
- External connection design, no need to open for construction
- Exposed detection interface for easy detection and maintenance

Reliable Performance

- Panasonic high quality specialized scroll compressor
- Rich and complete unit protection configuration
- Complete valve configuration
- Minimize threaded connections and use brazing connections as much as possible to minimize potential leakage

Microprocessor

- More precise control to improve system efficiency
- Dynamically display the operating parameters and display fault codes when an alarm occurs
- View the operating status, historical data, and alarm records of the unit through the mobile APP

Model Description

List of Capacity

OCU - N R 300 D S F - D

Power supply	D	1 phase
Unit type	F	Air-cooled condensing unit
Temperature	QS	Low temperature with EVI
	S	Low temperature
	H	Medium & High temperature
Type of control	N/A	Fixed frequency control
	D	DC variable frequency control
	V	AC variable frequency control
Development code	0~9	
Output power	10~Y	1~ZHP (value=OPx10; Z: Integer, Y: Zx10)
Compressor type	S	Panasonic Scroll compressor
	R	Vertical rotary compressor
Refrigerant	N	R404A
	N/A	R22
Application	Air-cooled Outdoor condensing unit	

Note: ambient temperature below: -15°C, low-temperature startup option package is required.

UF - N RH 11 6 0 S F J

Origin	J	Dalian
Type	F	Integrated
Temperature	L	Low temperature
	S	Low & medium temperature
	H	High temperature
Design Code	0~9	
Power supply	N/A	3 phase/380V
	3	3 phase/200V
	6	1 phase/220V
	8	3 phase/380V
Output power	8: 750W 11: 1100W 15: 1500W 22: 2200W	
Compressor type	RH	Horizontal rotary compressor
	R	Vertical rotary compressor
	S	Scroll compressor
Refrigerant	N	R404A
	N/A	R22
Application	UF Air-cooled indoor unit	

1. Medium Temperature Scroll Unit

MT | Ambient Temp.: -25°C ~ +48°C | Evaporative Temp.: -15°C ~ +10°C | Power Supply: 3Φ380V 50Hz | R22

Model	Evaporative Temp. (°C)	Ambient Temp.: 32°C			Ambient Temp.: 38°C			Ambient Temp.: 43°C		
		Capacity(kw)	Power input (kw)	Current(A)	Capacity(kw)	Power input (kw)	Current(A)	Capacity(kw)	Power input (kw)	Current(A)
OCU-S400HF	-15	5.13	2.79	5.50	4.80	3.14	6.00	4.49	3.47	6.49
	-10	6.56	2.81	5.53	5.91	3.23	6.13	5.52	3.59	6.67
	-5	8.04	2.94	5.71	7.29	3.34	6.31	6.89	3.69	6.82
	0	9.60	3.02	5.83	8.99	3.39	6.37	8.19	3.81	7.00
	5	11.51	3.31	6.25	10.53	3.57	6.64	9.65	3.97	7.26
	10	13.36	3.48	6.51	12.56	3.92	7.19	—	—	—
OCU-S500HF	-15	6.58	3.99	3.48	6.14	3.90	7.14	5.73	4.32	7.76
	-10	8.19	4.04	3.53	7.55	4.03	7.32	7.00	4.47	7.97
	-5	10.00	4.18	3.67	9.26	4.08	7.38	8.62	4.64	8.22
	0	11.93	4.30	3.80	11.07	4.27	7.68	10.33	4.76	8.44
	5	14.24	4.56	4.08	13.03	4.42	7.92	12.23	4.87	8.60
	10	16.59	4.86	4.08	15.44	4.72	8.38	—	—	—
OCU-S600HF	-15	7.93	4.64	7.59	7.21	4.69	8.51	—	—	—
	-10	9.68	4.82	7.71	8.79	4.80	8.67	8.10	5.40	9.59
	-5	12.18	5.01	7.84	11.08	4.88	8.80	10.30	5.52	9.79
	0	14.36	5.20	8.28	13.16	5.11	9.15	12.32	5.74	10.15
	5	16.36	5.55	8.63	15.58	5.32	9.48	14.42	5.99	10.56
	10	19.08	5.79	9.01	17.72	5.73	10.15	—	—	—
OCU-S700HF	-15	9.14	5.07	8.64	8.27	4.99	9.34	7.78	5.50	10.09
	-10	10.93	5.29	8.80	9.67	5.30	9.80	9.26	5.67	10.36
	-5	13.10	5.61	9.24	12.52	5.54	10.15	11.51	6.02	10.89
	0	15.20	6.02	9.74	14.43	5.94	10.76	13.50	6.56	11.74
	5	17.92	6.29	10.14	16.86	6.13	11.07	15.81	6.82	12.13
	10	21.24	6.56	10.68	19.01	6.53	11.68	—	—	—
OCU-S800HF	-15	11.28	6.23	10.83	10.71	6.02	11.52	9.54	6.60	12.44
	-10	14.15	6.41	10.65	13.18	6.40	12.11	12.22	6.87	12.86
	-5	17.32	6.78	11.18	16.62	6.21	11.77	14.84	7.32	13.57
	0	20.49	6.99	11.51	19.24	6.87	12.81	17.83	7.75	14.25
	5	23.36	7.38	12.56	22.00	7.55	13.89	20.75	8.18	14.92
	10	25.09	8.04	12.98	24.28	7.73	14.19	23.88	7.95	14.57

List of Capacity

List of Capacity

2. Medium Temperature Scroll Unit											R404A
MT	Ambient Temp.: -25°C ~ +48°C			Evaporative Temp.: -15°C ~ +10°C			Power supply 3Φ380V 50Hz				
Model	Evaporative Temp. (°C)	Ambient Temp.: 32°C			Ambient Temp.: 38°C			Ambient Temp.: 43°C			
		Capacity(kw)	Power(kw)	Current(A)	Capacity(kw)	Power(kw)	Current(A)	Capacity(kw)	Power(kw)	Current(A)	
OCU-NS400HF	-15	5.71	3.18	6.29	5.05	3.59	6.86	4.60	3.96	7.39	
	-10	6.80	3.32	6.48	6.06	3.71	7.04	5.43	4.08	7.56	
	-5	8.40	3.43	6.63	7.57	3.82	7.18	6.90	4.20	7.74	
	0	9.85	3.59	6.87	9.01	4.04	7.50	8.28	4.45	8.12	
	5	11.30	3.71	7.04	10.22	4.16	7.70	9.32	4.59	8.34	
	10	12.96	3.83	7.12	11.79	4.30	7.84	—	—	—	
	OCU-NS500HF	-15	7.20	3.99	7.30	6.47	4.53	8.10	5.84	5.01	8.83
-10		8.66	4.04	7.37	7.79	4.74	8.43	6.83	5.10	8.99	
-5		11.03	4.18	7.58	9.88	4.76	8.46	8.88	5.34	9.34	
0		12.76	4.30	7.76	11.46	4.85	8.59	10.59	5.35	9.37	
5		14.54	4.56	8.16	13.61	4.99	8.82	12.61	5.57	9.72	
10		16.98	4.86	8.63	15.52	5.18	9.12	—	—	—	
OCU-NS600HF		-15	8.77	4.64	8.39	7.56	5.32	9.43	6.72	5.99	10.45
	-10	10.41	4.82	8.67	9.35	5.42	9.59	8.40	6.08	10.62	
	-5	12.81	5.01	8.95	11.55	5.70	10.10	10.61	6.46	11.21	
	0	14.99	5.20	9.26	13.65	5.99	10.48	12.39	6.75	11.75	
	5	17.37	5.55	9.83	15.65	6.27	10.92	14.39	7.03	12.20	
	10	19.80	5.79	10.20	18.06	6.65	11.57	—	—	—	
OCU-NS700HF	-15	9.42	5.07	9.50	8.48	5.78	10.55	7.60	6.38	11.49	
	-10	11.53	5.29	9.83	10.28	5.94	10.80	9.24	6.66	11.92	
	-5	14.02	5.61	10.31	12.72	6.25	11.28	11.87	7.00	12.46	
	0	16.61	6.02	10.94	15.25	6.60	11.84	13.95	7.30	12.95	
	5	18.31	6.29	11.35	17.20	6.75	12.08	15.77	7.46	13.21	
	10	22.70	6.56	11.80	19.75	7.34	13.04	—	—	—	
	OCU-NS800HF	-15	12.00	6.23	11.80	11.14	6.83	12.74	10.03	7.40	13.63
-10		14.12	6.41	12.08	13.03	7.18	13.29	12.25	7.66	14.05	
-5		17.71	6.78	12.64	16.53	7.36	13.56	14.92	7.91	14.45	
0		20.27	6.99	12.97	18.69	7.75	14.19	16.76	8.40	15.24	
5		22.26	7.38	13.59	20.42	8.04	14.67	18.62	8.56	15.51	
10		26.57	8.04	14.67	24.97	8.65	15.67	22.92	9.14	16.48	

3. Single phase low & medium temperature rotary unit											R404A
LT	MT	Ambient Temp.: -25°C ~ +48°C			Evaporative Temp.: -40°C ~ -5°C			Power supply 1Φ220V 50Hz			
Model	Evaporative Temp. (°C)	Ambient Temp.: 32°C			Ambient Temp.: 38°C			Ambient Temp.: 43°C			
		Capacity(kw)	Power(kw)	Current(A)	Capacity(kw)	Power(kw)	Current(A)	Capacity(kw)	Power(kw)	Current(A)	
OCU-NR200SF-D	-40	0.97	1.42	7.86	0.93	1.53	8.28	0.85	1.58	8.44	
	-35	1.26	1.46	8.03	1.16	1.58	8.44	1.06	1.67	8.82	
	-30	1.55	1.52	8.22	1.40	1.64	8.67	1.30	1.75	9.12	
	-25	1.94	1.56	8.40	1.74	1.69	8.89	1.58	1.85	9.53	
	-20	2.34	1.63	8.64	2.11	1.76	9.18	1.90	1.93	9.87	
	-15	2.83	1.68	8.84	2.54	1.79	9.28	2.26	1.94	9.92	
	-10	3.33	1.71	8.96	2.96	1.87	9.64	2.71	2.00	10.16	
-5	4.16	1.74	9.06	3.88	1.90	9.74	3.52	2.06	10.40		
OCU-NR300SF-D	-40	1.41	1.98	11.99	1.28	2.16	12.53	1.16	2.30	13.01	
	-35	1.74	2.08	12.29	1.57	2.24	12.82	1.45	2.40	13.35	
	-30	2.20	2.18	12.63	2.01	2.36	13.21	1.83	2.52	13.80	
	-25	2.66	2.28	12.95	2.41	2.46	13.59	2.22	2.63	14.22	
	-20	3.30	2.36	13.26	2.94	2.59	14.07	2.67	2.77	14.75	
	-15	3.90	2.46	13.62	3.51	2.66	14.36	3.13	2.90	15.29	
	-10	4.49	2.57	14.02	4.15	2.79	14.89	3.82	3.00	15.73	
-5	5.66	2.64	14.25	5.06	2.88	15.20	4.80	3.09	16.08		

4. low & medium temperature rotary unit										
LT	MT	Ambient Temp.: -25°C ~ +48°C			Evaporative Temp.: -40°C ~ -5°C			Power supply 3Φ380V 50Hz		
Model	Evaporative Temp. (°C)	Ambient Temp.: 32°C			Ambient Temp.: 38°C			Ambient Temp.: 43°C		
		Capacity(kw)	Power(kw)	Current(A)	Capacity(kw)	Power(kw)	Current(A)	Capacity(kw)	Power(kw)	Current(A)
OCU-R300SF R22	-40	1.33	1.50	3.02	1.19	1.64	3.21	1.08	1.78	3.41
	-35	1.70	1.60	3.15	1.52	1.74	3.36	1.40	1.88	3.56
	-30	2.14	1.67	3.25	1.94	1.85	3.51	1.83	2.02	3.75
	-25	2.64	1.81	3.44	2.42	1.98	3.70	2.23	2.13	3.93
	-20	3.28	1.87	3.55	2.95	2.10	3.89	2.74	2.27	4.15
	-15	3.95	2.15	3.96	3.62	2.31	4.22	3.35	2.50	4.51
	-10	4.69	2.26	4.15	4.29	2.48	4.48	3.94	2.68	4.80
-5	5.60	2.37	4.30	5.16	2.60	4.69	4.73	2.84	5.06	
OCU-NR300SF R404A	-40	1.35	1.74	3.35	1.21	1.88	3.56	1.11	2.02	3.77
	-35	1.71	1.81	3.47	1.55	1.98	3.70	1.43	2.12	3.92
	-30	2.23	1.93	3.63	1.98	2.07	3.85	1.83	2.23	4.10
	-25	2.64	2.03	3.79	2.37	2.21	4.07	2.19	2.38	4.32
	-20	3.16	2.10	3.88	2.84	2.29	4.18	2.65	2.51	4.53
	-15	3.90	2.19	4.04	3.47	2.41	4.38	3.11	2.60	4.68
	-10	4.58	2.30	4.20	4.12	2.52	4.54	3.65	2.72	4.86
-5	5.75	2.38	4.33	5.08	2.63	4.72	4.70	2.82	5.03	

Note: 2HP, 3HP, at the moment of starting a single phase unit, ensure that the voltage reference value is within ± 10% range. If it exceeds the range, the unit cannot start, which may cause damage to the unit.

List of Capacity

List of Capacity

5. Low temperature scroll VI unit										
LT										
Ambient Temp.: -25°C ~ +48°C Evaporative Temp.: -40°C ~ -15°C Power supply: 3Φ380V 50Hz										
Model	Evaporative Temp. (°C)	Ambient Temp.: 32°C			Ambient Temp.: 38°C			Ambient Temp.: 43°C		
		Capacity(kw)	Power(kw)	Current(A)	Capacity(kw)	Power(kw)	Current(A)	Capacity(kw)	Power(kw)	Current(A)
OCU-S400QSF	-40	2.24	2.62	5.26	2.21	3.01	5.79	2.16	3.61	6.63
	-35	2.91	2.82	5.54	2.77	3.26	6.14	2.88	3.71	6.79
	-30	3.57	2.86	5.59	3.40	3.33	6.24	3.31	3.83	6.97
	-25	4.46	2.97	5.75	4.24	3.45	6.44	4.10	3.92	7.12
	-20	5.45	3.04	5.85	5.27	3.51	6.52	5.00	3.95	7.18
OCU-S500QSF	-15	6.48	3.09	5.92	6.16	3.54	6.57	6.04	4.04	7.31
	-40	3.05	3.61	6.75	2.92	4.05	7.38	2.76	4.47	7.97
	-35	3.81	3.71	6.89	3.73	4.18	7.58	3.44	4.52	8.05
	-30	4.78	3.82	7.05	4.56	4.33	7.80	4.32	4.62	8.21
	-25	5.71	3.91	7.18	5.28	4.47	8.01	5.19	4.81	8.50
OCU-S600QSF	-20	6.87	3.93	7.22	6.58	4.55	8.13	6.30	4.91	8.67
	-15	8.15	4.04	7.37	7.99	4.59	8.19	7.59	5.04	8.88
	-40	3.30	3.88	7.61	3.22	4.33	8.21	3.15	4.88	9.00
	-35	4.14	3.92	7.66	3.94	4.43	8.35	3.83	4.95	9.10
	-30	5.20	4.02	7.80	4.95	4.53	8.52	4.75	5.04	9.22
OCU-S800QSF	-25	6.27	4.05	7.85	6.01	4.63	8.64	5.82	5.14	9.38
	-20	7.52	4.19	8.05	7.23	4.75	8.84	6.85	5.28	9.62
	-15	9.00	4.31	8.23	8.65	4.84	8.97	8.25	5.39	9.78
	-40	4.68	5.29	10.29	4.48	5.97	11.29	4.35	6.82	12.58
	-35	6.00	5.62	10.80	5.82	6.20	11.66	5.55	7.03	12.92
OCU-NS400QSF	-30	7.47	5.75	11.00	7.18	6.55	12.21	7.01	7.45	13.61
	-25	9.53	6.12	11.57	8.98	6.84	12.67	8.60	7.73	14.08
	-20	11.25	6.4	12.00	10.93	7.24	13.30	10.39	7.96	14.44
	-15	13.52	6.63	12.36	12.9	7.63	13.93	12.37	8.23	14.88
	-10	15.77	6.9	12.8	15.16	7.90	14.39	14.58	8.47	15.33
OCU-NS500QSF	-5	18.99	7.35	13.51	18.41	8.37	15.52	17.45	8.89	15.96
	-40	2.50	3.22	6.10	2.28	3.82	6.97	2.17	4.50	8.00
	-35	3.18	3.32	6.25	2.94	3.92	7.13	2.78	4.55	8.06
	-30	4.07	3.43	6.42	3.77	4.03	7.30	3.41	4.63	8.20
	-25	4.98	3.49	6.50	4.71	4.08	7.37	4.29	4.66	8.25
OCU-NS600QSF	-20	5.81	3.52	6.56	5.70	4.09	7.41	5.26	4.74	8.41
	-15	6.81	3.54	6.59	6.62	4.17	7.54	6.34	4.77	8.45
	-40	3.35	4.16	7.53	3.18	4.77	8.43	3.04	5.31	9.20
	-35	4.25	4.24	7.65	3.98	4.85	8.56	3.90	5.37	9.27
	-30	5.21	4.32	7.77	4.96	5.04	8.84	4.78	5.46	9.51
OCU-NS800QSF	-25	6.45	4.35	7.83	6.08	5.04	8.88	5.67	5.62	9.77
	-20	7.67	4.45	7.97	7.27	5.10	8.97	6.85	5.73	9.95
	-15	8.73	4.66	8.31	8.53	5.14	9.04	7.92	5.78	10.03
	-40	3.73	4.39	8.31	3.45	5.31	9.62	3.27	6.13	10.84
	-35	4.68	4.44	8.39	4.33	5.38	9.73	4.07	6.14	10.88
OCU-NS500SF	-30	5.76	4.66	8.71	5.26	5.42	9.82	5.09	6.15	10.90
	-25	6.95	4.77	8.87	6.28	5.54	10.00	5.89	6.29	11.14
	-20	8.31	4.80	8.93	7.47	5.59	10.08	6.99	6.36	11.25
	-15	9.58	4.93	9.12	8.91	5.77	10.36	8.47	6.43	11.37
	-10	11.16	5.11	10.94	10.94	5.64	6.19	11.65	5.46	6.70
OCU-NS600SF	-5	5.97	5.71	10.94	5.64	6.19	11.65	5.46	6.70	12.44
	-40	7.44	6.03	11.43	7.35	6.59	12.28	6.84	7.02	12.94
	-35	9.22	6.26	11.78	8.79	6.78	12.58	8.46	7.36	13.49
	-30	11.16	6.82	12.65	10.58	7.53	13.78	10.15	8.00	14.54
	-25	13.26	7.20	13.27	12.49	7.72	14.10	11.45	8.25	14.94
OCU-NS800SF	-20	14.98	7.28	13.40	13.33	7.99	14.54	12.57	8.54	15.44
	-15	17.65	7.71	14.08	16.19	8.42	15.23	14.91	9.14	16.44
	-10	21.22	8.23	14.90	19.05	9.02	16.21	17.53	9.55	17.11

6. Low temperature scroll EVI unit										
LT										
Ambient Temp.: -25°C ~ +48°C Evaporative Temp.: -40°C ~ -15°C Power supply: 3Φ380V 50Hz										
Model	Evaporative Temp. (°C)	Ambient Temp.: 32°C			Ambient Temp.: 38°C			Ambient Temp.: 43°C		
		Capacity(kw)	Power(kw)	Current(A)	Capacity(kw)	Power(kw)	Current(A)	Capacity(kw)	Power(kw)	Current(A)
OCU-S400SF	-40	1.96	2.56	5.17	1.83	2.95	5.69	1.69	3.30	6.18
	-35	2.46	2.60	5.23	2.33	3.00	5.78	2.28	3.38	6.31
	-30	2.84	2.64	5.30	2.76	3.05	5.85	2.55	3.43	6.38
	-25	3.68	2.69	5.35	3.28	3.09	5.91	3.15	3.50	6.48
	-20	4.47	2.73	5.42	4.11	3.17	6.04	3.87	3.58	6.62
OCU-S500SF	-15	5.40	2.79	5.51	4.89	3.23	6.11	4.69	3.61	6.66
	-40	2.61	3.33	6.37	2.40	3.83	7.06	2.28	4.42	7.92
	-35	3.29	3.36	6.42	3.06	3.87	7.12	2.84	4.49	8.04
	-30	4.02	3.42	6.50	3.75	3.92	7.21	3.50	4.52	8.09
	-25	4.90	3.51	6.63	4.61	3.98	7.30	4.26	4.65	8.28
OCU-S600SF	-20	5.99	3.65	6.83	5.64	4.12	7.51	5.25	4.67	8.33
	-15	7.22	3.66	6.85	6.85	4.18	7.60	6.35	4.74	8.44
	-40	2.87	3.68	7.62	2.69	4.09	8.16	2.53	4.59	8.81
	-35	3.43	3.70	7.65	3.30	4.14	8.21	3.10	4.67	8.92
	-30	4.23	3.76	7.73	4.01	4.21	8.31	3.78	4.78	9.07
OCU-S800SF	-25	5.10	3.80	7.79	4.76	4.32	8.46	4.47	4.84	9.15
	-20	6.07	3.91	7.92	5.69	4.38	8.54	5.34	4.85	9.20
	-15	7.37	3.96	8.00	6.85	4.45	8.64	6.46	4.92	9.30
	-40	2.04	3.04	5.84	1.85	3.55	6.56	1.72	4.02	7.26
	-35	2.48	3.05	5.86	2.25	3.60	6.65	2.04	4.09	7.38
OCU-NS400SF	-30	3.11	3.08	5.90	2.75	3.61	6.66	2.63	4.09	7.39
	-25	3.76	3.01	5.81	3.34	3.65	6.73	3.15	4.10	7.41
	-20	4.50	3.08	5.92	4.03	3.52	6.56	3.83	4.12	7.45
	-15	5.41	3.16	6.04	4.81	3.61	6.68	4.37	4.03	7.31
	-40	2.61	3.85	7.08	2.36	4.43	7.92	2.26	4.95	8.72
OCU-NS500SF	-35	3.19	3.91	7.18	2.85	4.47	8.00	2.55	5.03	8.83
	-30	3.95	4.02	7.33	3.55	4.52	8.08	3.17	5.08	8.93
	-25	4.62	3.81	7.04	4.36	4.58	8.18	4.12	5.11	8.98
	-20	5.76	4.05	7.25	5.11	4.44	7.97	4.77	5.18	9.09
	-15	7.05	4.06	7.41	6.22	4.60	8.23	5.55	5.07	8.94
OCU-NS600SF	-40	2.91	4.06	7.81	2.57	4.93	9.04	2.42	5.71	10.27
	-35	3.52	4.10	7.87	3.09	4.97	9.09	2.67	5.74	10.36
	-30	4.37	4.34	8.22	3.77	4.87	8.98	3.38	5.72	10.24
	-25	4.98	4.18	7.98	4.50	5.03	9.21	4.28	5.72	10.24
	-20	6.25	4.37	8.12	5.25	4.86	8.96	4.87	5.74	10.28
-15	7.73	4.29	8.13	6.50	5.16	9.43	5.94	5.65	10.13	

List of Capacity

20. OCU-NR800DSF Low & medium temperature inverter unit										R404A
Frequency	Evaporative Temp. (°C)	Ambient Temp.: 32°C			Ambient Temp.: 38°C			Ambient Temp.: 43°C		
		Capacity(kw)	Power(kw)	Current(A)	Capacity(kw)	Power(kw)	Current(A)	Capacity(kw)	Power(kw)	Current(A)
90HZ	-35	3.53	2.79	5.71	3.29	3.04	5.79	3.25	3.44	6.85
	-30	4.17	2.74	5.94	3.86	3.21	6.21	3.81	3.55	7.09
	-25	4.65	2.75	6.14	4.35	3.10	6.20	4.30	3.50	7.37
	-20	5.08	2.80	5.80	4.69	3.15	6.65	4.52	3.35	7.63
	-15	6.01	2.85	5.71	5.66	3.20	6.50	5.16	3.29	7.63
	-10	7.52	2.88	5.97	6.82	3.22	6.52	6.23	3.44	7.57
	-5	9.63	3.00	6.11	8.85	3.37	6.79	8.28	3.60	7.29
	0	11.25	3.18	6.41	10.69	3.44	6.94	9.86	3.72	7.53
	5	13.29	3.22	6.49	12.48	3.53	7.15	11.62	3.82	7.75
180HZ	-35	5.67	4.04	8.18	5.24	4.57	9.07	4.78	5.03	9.89
	-30	6.54	4.22	8.52	6.39	4.62	9.16	5.75	5.18	10.16
	-25	8.22	4.59	8.55	7.67	4.83	9.45	7.22	5.21	10.20
	-20	9.52	4.76	8.52	8.86	4.95	9.65	8.57	5.36	10.56
	-15	10.03	4.65	9.02	9.35	5.10	9.73	9.85	5.45	10.65
	-10	11.46	4.86	9.62	10.56	5.25	10.07	10.53	5.65	10.59
	-5	14.23	5.03	9.91	13.40	5.38	10.54	12.57	5.75	11.17
	0	16.92	5.19	10.21	15.90	5.86	11.00	14.80	6.04	11.64
	5	19.45	5.55	10.81	18.13	5.95	11.51	16.99	6.39	12.26
240HZ	-35	7.30	5.86	11.62	6.81	6.44	12.55	6.26	7.01	13.53
	-30	8.53	6.26	12.22	8.13	6.80	13.17	7.48	7.41	14.29
	-25	10.31	6.56	12.75	9.76	7.13	13.72	8.91	7.72	14.75
	-20	12.26	6.85	13.14	11.63	7.54	14.43	10.53	8.24	15.64
	-15	14.15	6.90	13.85	13.67	7.99	15.36	12.22	8.59	16.33
	-10	15.85	7.10	14.51	15.45	8.15	16.11	13.84	9.10	17.19
	-5	17.94	7.34	14.88	17.38	8.63	16.56	15.61	9.25	17.45
	0	20.52	7.91	15.21	18.79	8.71	16.89	17.75	9.34	17.88
	5	22.08	8.26	15.85	20.60	8.79	17.23	20.02	9.44	18.23

List of Capacity

18. OCU-NR800DSFK Low & medium temperature inverter unit										R404A
Speed rate	Evaporative Temp. (°C)	Condensing Temp.: 40°C			Condensing Temp.: 45°C			Condensing Temp.: 50°C		
		Capacity(kw)	Power(kw)	Current(A)	Capacity(kw)	Power(kw)	Current(A)	Capacity(kw)	Power(kw)	Current(A)
40rps	-40	1.73	2.25	4.96	1.73	2.41	5.16	1.66	2.81	5.43
	-35	2.15	2.35	5.11	2.13	2.52	5.32	2.08	2.72	5.59
	-30	2.71	2.44	5.24	2.66	2.62	5.47	2.62	2.82	5.75
	-25	3.41	2.53	5.36	3.33	2.72	5.62	3.30	2.93	5.90
	-20	4.22	2.62	5.47	4.15	2.81	5.75	4.10	3.02	6.04
	-15	5.60	2.86	5.75	5.51	3.07	6.05	5.45	3.32	6.36
	-10	6.77	2.93	5.85	6.68	3.15	6.16	6.61	3.41	6.50
	-5	8.10	2.99	5.95	8.00	3.22	6.27	7.90	3.49	6.64
	0	2.84	3.34	7.29	2.82	3.59	7.59	2.72	3.87	7.97
60rps	-35	3.54	3.50	7.51	3.49	3.74	7.82	3.41	4.03	8.21
	-30	4.45	3.63	7.70	4.38	3.90	8.05	4.30	4.19	8.44
	-25	5.58	3.76	7.88	5.48	4.03	8.24	5.41	4.35	8.66
	-20	6.93	3.89	8.04	6.81	4.17	8.44	6.73	4.48	8.87
	-15	8.84	4.37	8.39	8.70	4.69	8.82	8.60	5.06	9.28
	-10	10.69	4.47	8.54	10.55	4.82	8.99	10.42	5.21	9.49
	-5	12.78	4.57	8.68	12.64	4.92	9.14	12.47	5.34	9.69
	0	3.78	4.32	9.38	3.77	4.63	9.75	3.63	5.00	10.26
	5	4.71	4.51	9.65	4.65	4.84	10.05	4.54	5.21	10.55
80rps	-30	5.92	4.69	9.69	5.82	5.03	10.34	5.73	5.41	10.85
	-25	7.43	4.86	10.12	7.29	5.21	10.61	7.20	5.62	11.13
	-20	9.22	5.01	10.33	9.06	5.39	10.86	8.97	5.80	11.41
	-15	11.31	6.12	11.91	11.13	6.58	12.51	11.01	7.09	13.18
	-10	13.69	6.27	12.11	13.50	6.75	12.76	13.34	7.30	13.47
	-5	16.35	6.41	12.31	16.16	6.90	12.99	15.95	7.49	13.76

19. OCU-NS800DSFK Low & medium temperature inverter unit										R404A
Speed rate	Evaporative Temp. (°C)	Condensing Temp.: 40°C			Condensing Temp.: 45°C			Condensing Temp.: 50°C		
		Capacity(kw)	Power(kw)	Current(A)	Capacity(kw)	Power(kw)	Current(A)	Capacity(kw)	Power(kw)	Current(A)
30HZ	-40	2.70	3.80	7.96	2.52	4.30	8.58	2.34	4.85	9.36
	-35	3.36	3.90	8.19	3.18	4.35	8.81	2.88	4.85	9.52
	-30	4.20	4.00	8.35	3.90	4.40	8.97	3.72	4.85	9.67
	-25	5.22	4.15	8.58	4.92	4.50	9.20	4.68	4.90	9.83
	-20	6.54	4.25	8.74	6.18	4.55	9.36	5.82	4.95	9.98
	-15	8.11	4.43	9.12	7.36	4.74	9.76	7.02	5.10	10.32
	-10	9.95	4.48	9.36	9.26	4.74	9.84	8.90	5.05	10.48
	-5	12.19	4.58	9.44	11.39	4.69	10.00	10.64	5.00	10.56
	0	4.37	5.10	9.59	3.85	5.80	9.98	3.80	6.15	10.45
45HZ	-35	5.29	5.30	9.98	5.00	5.80	10.45	4.72	6.35	10.92
	-30	6.50	5.50	10.45	6.15	6.00	10.84	5.87	6.55	11.31
	-25	8.05	5.70	10.84	7.65	6.20	11.23	7.30	6.75	11.70
	-20	10.01	5.90	11.23	9.49	6.40	11.62	9.03	6.95	12.01
	-15	12.10	6.33	12.14	11.11	6.80	12.55	10.62	7.36	12.96
	-10	14.63	6.54	12.55	13.64	7.06	12.87	12.98	7.57	13.20
	-5	17.60	6.80	12.79	16.50	7.26	13.12	15.40	7.83	13.45
	0	5.36	7.00	12.77	4.99	7.67	13.30	4.67	8.39	13.76
	5	6.51	7.26	13.38	6.14	7.93	13.91	5.67	8.65	14.36
60HZ	-30	7.93	7.52	13.98	7.56	8.19	14.44	7.19	8.96	14.90
	-25	9.92	7.78	14.35	9.40	8.50	14.97	8.98	9.12	15.43
	-20	12.29	8.09	14.77	11.66	8.76	15.43	11.03	9.53	15.88
	-15	14.80	8.67	15.20	13.60	9.42	16.64	13.00	10.22	17.12
	-10	18.00	8.99	15.62	16.70	9.74	17.04	15.90	10.54	17.44
	-5	21.50	9.36	16.05	20.20	10.06	17.44	18.90	10.86	17.76

List of Capacity

List of Capacity

7. OCU-NR300DSF Low & medium temperature inverter unit										
R404A										
LT MT Inverter Ambient Temp.: -25°C ~ +48°C Evaporative Temp.: -40°C ~ -5°C Power supply : 3Φ380V 50Hz										
Frequency	Evaporative Temp.: (°C)	Ambient Temp.: 32°C			Ambient Temp.: 38°C			Ambient Temp.: 43°C		
		Capacity(kw)	Power(kw)	Current(A)	Capacity(kw)	Power(kw)	Current(A)	Capacity(kw)	Power(kw)	Current(A)
160Hz	-40	1.60	1.86	3.80	1.45	1.97	4.03	1.36	2.10	4.28
	-35	2.01	2.00	4.08	1.85	2.14	4.36	1.70	2.26	4.60
	-30	2.41	2.14	4.36	2.26	2.30	4.66	2.07	2.42	4.90
	-25	2.98	2.30	4.67	2.79	2.45	4.95	2.45	2.58	5.19
	-20	3.56	2.49	5.02	3.32	2.63	5.29	2.89	2.80	5.62
	-15	4.29	2.65	5.33	3.90	2.84	5.69	3.51	3.00	6.00
	-10	5.03	2.83	5.67	4.56	3.03	6.05	4.16	3.23	6.41
	-5	6.24	3.00	6.00	5.72	3.25	6.47	5.49	3.48	6.89
120Hz	-40	1.23	1.42	2.94	1.15	1.52	3.14	1.05	1.61	3.33
	-35	1.55	1.51	3.11	1.42	1.61	3.32	1.29	1.71	3.53
	-30	1.93	1.61	3.32	1.75	1.71	3.53	1.59	1.81	3.74
	-25	2.30	1.70	3.51	2.16	1.82	3.75	2.02	1.94	3.98
	-20	2.83	1.81	3.71	2.58	1.93	3.96	2.38	2.06	4.21
	-15	3.39	1.91	3.91	3.10	2.06	4.20	2.85	2.19	4.47
	-10	3.90	2.01	4.10	3.64	2.17	4.42	3.38	2.32	4.71
80Hz	-40	0.83	1.02	2.12	0.73	1.09	2.25	0.72	1.16	2.41
	-35	1.03	1.06	2.21	0.97	1.14	2.38	0.92	1.22	2.53
	-30	1.29	1.12	2.33	1.20	1.21	2.51	1.13	1.28	2.66
	-25	1.58	1.17	2.45	1.47	1.27	2.63	1.37	1.35	2.79
	-20	1.92	1.23	2.55	1.75	1.32	2.74	1.63	1.41	2.92
	-15	2.33	1.29	2.68	2.08	1.38	2.88	1.92	1.48	3.06
	-10	2.76	1.33	2.77	2.52	1.46	3.03	2.35	1.56	3.23
50Hz	-40	0.45	0.75	1.56	0.43	0.81	1.69	0.40	0.87	1.82
	-35	0.63	0.77	1.59	0.59	0.84	1.75	0.54	0.89	1.87
	-30	0.80	0.79	1.66	0.75	0.86	1.80	0.73	0.92	1.94
	-25	0.98	0.82	1.71	0.89	0.89	1.86	0.84	0.96	2.01
	-20	1.20	0.85	1.77	1.13	0.93	1.95	1.09	1.00	2.11
	-15	1.45	0.88	1.82	1.36	0.96	2.00	1.27	1.05	2.20
	-10	1.73	0.90	1.87	1.55	1.01	2.10	1.40	1.09	2.28
-5	2.21	0.92	1.92	2.03	1.02	2.14	1.91	1.12	2.34	

8. OCU-NR450DSF Low & medium temperature inverter unit										
R404A										
LT MT Inverter Ambient Temp.: -25°C ~ +48°C Evaporative Temp.: -40°C ~ -5°C Power supply : 3Φ380V 50Hz										
Frequency	Evaporative Temp.: (°C)	Ambient Temp.: 32°C			Ambient Temp.: 38°C			Ambient Temp.: 43°C		
		Capacity(kw)	Power(kw)	Current(A)	Capacity(kw)	Power(kw)	Current(A)	Capacity(kw)	Power(kw)	Current(A)
180Hz	-40	2.45	2.78	5.43	2.06	2.99	5.75	—	—	—
	-35	2.80	2.93	5.66	2.50	3.14	5.95	2.34	3.41	6.37
	-30	3.52	3.16	6.01	3.18	3.38	6.34	2.88	3.59	6.67
	-25	4.30	3.41	6.40	3.93	3.66	6.77	3.56	3.86	7.08
	-20	5.50	3.63	6.75	4.88	3.94	7.21	4.53	4.15	7.51
	-15	6.74	3.92	7.21	6.03	4.19	7.60	5.50	4.42	7.96
	-10	7.89	4.10	7.48	7.19	4.46	8.05	6.43	4.71	8.40
	-5	9.78	4.32	7.83	8.96	4.68	8.37	8.33	4.94	8.26
160Hz	-40	2.14	2.48	4.98	1.85	2.66	5.28	1.85	2.84	5.55
	-35	2.67	2.61	5.18	2.43	2.82	5.52	2.17	3.00	5.77
	-30	3.37	2.83	5.54	3.04	3.02	5.84	2.75	3.20	6.10
	-25	4.13	3.03	5.89	3.66	3.24	6.19	3.29	3.44	6.50
	-20	4.94	3.22	6.18	4.55	3.46	6.55	4.21	3.67	6.86
	-15	6.05	3.38	6.42	5.45	3.63	6.82	4.91	3.90	7.22
120Hz	-40	1.66	1.93	4.00	1.54	2.07	4.30	1.48	2.21	4.58
	-35	2.15	2.03	4.20	2.03	2.18	4.50	1.82	2.33	4.81
	-30	2.68	2.15	4.47	2.44	2.31	4.77	2.23	2.47	5.06
	-25	3.26	2.25	4.67	3.09	2.44	5.01	2.76	2.57	5.23
	-20	4.08	2.36	4.89	3.74	2.55	5.21	3.34	2.72	5.47
	-15	4.98	2.46	5.06	4.48	2.66	5.38	4.05	2.85	5.68
	-10	5.88	2.56	5.24	5.31	2.78	5.57	4.79	2.96	5.85
80Hz	-40	1.12	1.40	2.90	1.03	1.54	3.23	0.92	1.64	3.45
	-35	1.43	1.46	3.04	1.31	1.58	3.30	1.21	1.68	3.54
	-30	1.80	1.53	3.16	1.65	1.65	3.44	1.55	1.76	3.70
	-25	2.24	1.58	3.29	2.02	1.71	3.58	1.88	1.82	3.83
	-20	2.69	1.65	3.45	2.45	1.78	3.73	2.31	1.88	3.95
	-15	3.24	1.71	3.57	2.94	1.85	3.89	2.69	1.98	4.17
	-10	3.79	1.74	3.66	3.49	1.91	4.01	3.19	2.05	4.33
50Hz	-40	0.68	1.07	2.18	0.61	1.17	2.41	0.58	1.25	2.62
	-35	0.92	1.10	2.26	0.81	1.19	2.48	0.77	1.28	2.68
	-30	1.14	1.13	2.31	1.05	1.21	2.51	0.98	1.30	2.71
	-25	1.42	1.15	2.35	1.25	1.25	2.60	1.19	1.34	2.80
	-20	1.66	1.18	2.45	1.57	1.28	2.68	1.44	1.39	2.91
	-15	2.08	1.19	2.47	1.90	1.30	2.70	1.76	1.41	2.97
	-10	2.49	1.21	2.50	2.24	1.32	2.78	2.02	1.43	3.02
-5	3.16	1.22	2.51	2.90	1.34	2.80	2.69	1.47	3.10	

List of Capacity

List of Capacity

9. OCU-NR600DSF Low & medium temperature inverter unit										
R404A										
LT MT Inverter Ambient Temp.: -25°C ~ +48°C Evaporative Temp.: -40°C ~ -5°C Power supply: 3Φ380V 50Hz										
Frequency	Evaporative Temp.: (°C)	Ambient Temp.: 32°C			Ambient Temp.: 38°C			Ambient Temp.: 43°C		
		Capacity(kw)	Power(kw)	Current(A)	Capacity(kw)	Power(kw)	Current(A)	Capacity(kw)	Power(kw)	Current(A)
180Hz	-40	3.86	3.67	7.75	3.45	3.98	8.35	3.22	4.29	8.91
	-35	4.67	3.72	7.87	4.59	4.13	8.60	4.20	4.46	9.19
	-30	6.11	4.08	8.55	5.64	4.37	9.04	5.19	4.57	9.40
	-25	7.59	4.47	9.23	6.97	4.74	9.68	6.46	5.01	10.11
	-20	8.73	4.92	10.01	7.98	5.25	10.54	7.33	5.47	10.91
	-15	11.01	5.36	10.71	10.17	5.64	11.18	9.19	6.03	11.82
	-10	12.59	5.88	11.24	11.54	6.20	12.10	10.43	6.55	12.68
	-5	15.69	6.29	12.20	14.51	6.71	12.88	13.49	7.13	13.65
	0	17.39	6.81	12.81	15.96	7.01	13.44	14.35	7.49	14.29
	5	19.78	7.20	13.75	17.96	7.83	14.88	16.71	8.29	15.81
140Hz	-40	2.73	2.58	5.55	2.63	2.83	6.06	2.47	3.15	6.74
	-35	3.58	2.79	6.00	3.29	3.09	6.63	3.13	3.39	7.23
	-30	4.60	3.00	6.42	4.18	3.20	6.85	3.92	3.36	7.18
	-25	5.80	3.21	6.86	5.15	3.45	7.38	4.75	3.62	7.72
	-20	6.82	3.45	7.36	6.20	3.69	7.88	5.72	3.90	8.23
	-15	8.60	3.67	7.83	7.73	3.96	8.39	7.11	4.20	8.76
	-10	9.81	3.88	8.22	9.05	4.16	8.73	8.18	4.46	9.22
	-5	12.47	4.10	8.59	11.43	4.41	9.13	10.39	4.72	9.62
	0	14.31	4.40	9.13	13.04	4.74	9.70	12.00	5.08	10.22
	5	16.05	4.63	9.49	14.69	5.00	10.10	13.34	5.37	10.76
100Hz	-40	2.01	1.91	4.40	1.85	2.03	4.35	1.70	2.15	4.63
	-35	2.51	1.94	4.19	2.33	2.05	4.43	2.11	2.25	4.85
	-30	3.19	2.08	4.50	2.88	2.21	4.78	2.80	2.33	5.04
	-25	3.94	2.23	4.80	3.69	2.36	5.10	3.35	2.52	5.45
	-20	4.93	2.36	5.11	4.50	2.54	5.48	4.15	2.68	5.80
	-15	5.98	2.50	5.41	5.43	2.70	5.84	5.05	2.86	6.18
	-10	7.04	2.64	5.68	6.40	2.86	6.14	5.92	3.03	6.52
	-5	8.79	2.75	5.92	8.15	2.98	6.41	7.53	3.19	6.87
	0	10.28	2.83	6.08	9.37	3.11	6.68	8.68	3.35	7.18
	5	12.45	2.97	6.37	11.46	3.26	7.00	10.53	3.53	7.54
50Hz	-40	0.88	1.02	2.16	0.78	1.07	2.25	0.74	1.09	2.33
	-35	1.16	1.10	2.32	1.02	1.15	2.44	0.94	1.18	2.52
	-30	1.44	1.18	2.50	1.33	1.22	2.62	1.22	1.28	2.74
	-25	1.87	1.25	2.66	1.72	1.30	2.79	1.65	1.37	2.93
	-20	2.35	1.31	2.80	2.15	1.38	2.96	1.97	1.45	3.13
	-15	2.95	1.36	2.92	2.63	1.45	3.12	2.44	1.53	3.31
	-10	3.55	1.42	3.05	3.19	1.51	3.25	2.89	1.61	3.47
	-5	4.47	1.47	3.15	4.13	1.56	3.36	3.82	1.67	3.62
	0	5.35	1.46	3.13	4.93	1.60	3.44	4.54	1.72	3.73
	5	6.322	1.47	3.15	5.70	1.63	3.52	5.29	1.76	3.80

10. Low & medium temperature scroll EVI unit										
R22										
LT MT Ambient Temp.: -7°C ~ +43°C Evaporative Temp.: -40°C ~ -5°C Power supply: 1Φ220V 50Hz										
Model	Evaporative Temp.: (°C)	Ambient Temp.: 32°C			Ambient Temp.: 38°C			Ambient Temp.: 43°C		
		Capacity(kw)	Power(kw)	Current(A)	Capacity(kw)	Power(kw)	Current(A)	Capacity(kw)	Power(kw)	Current(A)
UF-RH860SFJ	-40	0.35	0.59	3.29	0.32	0.64	3.51	0.31	0.68	3.72
	-35	0.44	0.63	3.39	0.41	0.69	3.62	0.39	0.74	3.84
	-30	0.56	0.68	3.50	0.52	0.74	3.75	0.49	0.79	3.97
	-25	0.71	0.73	3.63	0.65	0.79	3.88	0.62	0.85	4.11
	-20	0.89	0.78	3.76	0.82	0.85	4.02	0.78	0.91	4.26
	-15	1.10	0.83	3.90	1.01	0.90	4.17	0.96	0.97	4.42
	-10	1.34	0.89	4.05	1.24	0.96	4.33	1.17	1.04	4.59
	-5	1.60	0.94	4.21	1.48	1.03	4.50	1.40	1.10	4.77
	0	1.89	0.94	4.21	1.48	1.03	4.50	1.40	1.10	4.77
	5	2.20	0.94	4.21	1.48	1.03	4.50	1.40	1.10	4.77
UF-RH1160SFJ	-40	0.58	0.64	6.37	0.53	0.70	6.81	0.51	0.75	7.21
	-35	0.78	0.70	6.42	0.72	0.76	6.86	0.69	0.82	7.27
	-30	1.01	0.77	6.50	0.93	0.83	6.95	0.88	0.90	7.36
	-25	1.25	0.84	6.61	1.15	0.92	7.06	1.09	0.98	7.48
	-20	1.51	0.93	6.74	1.39	1.01	7.21	1.32	1.09	7.63
	-15	1.79	1.03	6.90	1.65	1.12	7.38	1.56	1.20	7.81
	-10	2.08	1.13	7.09	1.92	1.23	7.58	1.82	1.32	8.03
	-5	2.40	1.25	7.30	2.21	1.36	7.80	2.10	1.46	8.27

11. 中低温涡旋喷液机组										
R22										
LT MT Ambient Temp.: -7°C ~ +43°C Evaporative Temp.: -40°C ~ -5°C Power supply: 3Φ380V 50Hz										
Model	Evaporative Temp.: (°C)	Ambient Temp.: 32°C			Ambient Temp.: 38°C			Ambient Temp.: 43°C		
		Capacity(kw)	Power(kw)	Current(A)	Capacity(kw)	Power(kw)	Current(A)	Capacity(kw)	Power(kw)	Current(A)
UF-RH1580SFJ	-40	0.91	1.32	2.77	0.84	1.44	2.96	0.80	1.54	3.14
	-35	1.19	1.36	2.83	1.10	1.48	3.03	1.04	1.59	3.20
	-30	1.48	1.44	2.86	1.36	1.57	3.06	1.30	1.68	3.24
	-25	1.88	1.54	2.93	1.73	1.68	3.13	1.65	1.80	3.32
	-20	2.29	1.62	3.01	2.11	1.76	3.22	2.01	1.89	3.41
	-15	2.74	1.72	3.09	2.53	1.87	3.30	2.40	2.01	3.50
	-10	3.23	1.82	3.20	2.98	1.98	3.42	2.83	2.13	3.62
	-5	3.77	1.94	3.33	3.48	2.11	3.56	3.30	2.27	3.77

12. Low temperature scroll EVI unit										
R22										
LT Ambient Temp.: -7°C ~ +43°C Evaporative Temp.: -40°C ~ -20°C Power supply: 3Φ380V 50Hz										
Model	Evaporative Temp.: (°C)	Ambient Temp.: 32°C			Ambient Temp.: 38°C			Ambient Temp.: 43°C		
		Capacity(kw)	Power(kw)	Current(A)	Capacity(kw)	Power(kw)	Current(A)	Capacity(kw)	Power(kw)	Current(A)
UF-RH2280LFJ	-40	1.12	1.20	3.36	1.03	1.31	3.59	0.98	1.40	3.81
	-35	1.39	1.29	3.50	1.28	1.40	3.74	1.22	1.51	3.96
	-30	1.76	1.39	3.71	1.62	1.51	3.97	1.54	1.63	4.20
	-25	2.21	1.53	3.96	2.04	1.67	4.23	1.94	1.79	4.48
	-20	2.75	1.70	4.23	2.54	1.85	4.52	2.41	1.99	4.79

List of Capacity

List of Capacity

13、Low & medium temperature scroll EVI unit										
R404A										
LT	MT	Ambient Temp.: -7°C ~ +43°C			Evaporative Temp.: -45°C ~ -5°C			Power supply: 1Φ220V 50Hz		
Model	Evaporative Temp.: (°C)	Ambient Temp.: 32°C			Ambient Temp.: 38°C			Ambient Temp.: 43°C		
		Capacity(kw)	Power(kw)	Current(A)	Capacity(kw)	Power(kw)	Current(A)	Capacity(kw)	Power(kw)	Current(A)
UF-NRH860SFJ	-45	0.27	0.67	3.25	0.24	0.73	3.47	0.23	0.78	3.68
	-40	0.43	0.70	3.37	0.39	0.76	3.60	0.37	0.82	3.82
	-35	0.59	0.73	3.44	0.54	0.79	3.68	0.52	0.85	3.90
	-30	0.71	0.75	3.53	0.65	0.82	3.77	0.62	0.88	4.00
	-25	0.91	0.78	3.64	0.84	0.85	3.89	0.80	0.92	4.12
	-20	0.96	0.81	3.78	0.89	0.88	4.04	0.84	0.94	4.28
	-15	1.23	0.84	3.93	1.14	0.92	4.20	1.08	0.98	4.45
	-10	1.40	0.87	4.09	1.29	0.95	4.37	1.22	1.02	4.63
	-5	1.56	0.91	4.29	1.44	0.99	4.59	1.37	1.06	4.86
UF-NRH1160SFJ	-45	0.46	0.99	6.43	0.45	1.05	6.57	0.41	1.10	6.70
	-40	0.61	1.03	6.53	0.53	1.09	6.68	0.49	1.14	6.81
	-35	0.79	1.07	6.65	0.65	1.13	6.81	0.58	1.18	6.94
	-30	0.98	1.12	6.78	0.79	1.18	6.96	0.69	1.23	7.08
	-25	1.20	1.17	6.93	0.98	1.23	7.13	0.81	1.28	7.25
	-20	1.44	1.23	7.09	1.19	1.29	7.32	0.96	1.33	7.43
	-15	1.71	1.28	7.27	1.44	1.35	7.52	1.12	1.39	7.64
	-10	1.99	1.34	7.47	1.72	1.42	7.75	1.30	1.45	7.86
	-5	2.30	1.40	7.69	2.03	1.49	7.99	1.50	1.52	8.10

14、Low & medium temperature scroll EVI unit										
R404A										
LT	MT	Ambient Temp.: -7°C ~ +43°C			Evaporative Temp.: -45°C ~ -5°C			Power supply: 3Φ380V 50Hz		
Model	Evaporative Temp.: (°C)	Ambient Temp.: 32°C			Ambient Temp.: 38°C			Ambient Temp.: 43°C		
		Capacity(kw)	Power(kw)	Current(A)	Capacity(kw)	Power(kw)	Current(A)	Capacity(kw)	Power(kw)	Current(A)
UF-NRH1580SFJ	-45	0.74	1.02	2.51	0.69	1.11	2.69	0.65	1.20	2.84
	-40	0.88	1.09	2.56	0.81	1.19	2.74	0.77	1.27	2.90
	-35	1.07	1.16	2.63	0.99	1.26	2.81	0.94	1.36	2.97
	-30	1.32	1.24	2.70	1.22	1.34	2.89	1.16	1.44	3.06
	-25	1.62	1.31	2.79	1.50	1.43	2.98	1.42	1.53	3.15
	-20	1.98	1.39	2.88	1.83	1.52	3.08	1.74	1.63	3.26
	-15	2.40	1.48	2.99	2.21	1.61	3.20	2.10	1.73	3.39
	-10	2.87	1.56	3.11	2.65	1.70	3.32	2.51	1.83	3.52
	-5	3.40	1.65	3.24	3.14	1.80	3.46	2.98	1.93	3.67

15、OCU-CR300DQSF Low & medium temperature inverter unit										
R410A										
Frequency	Evaporative Temp.: (°C)	Ambient Temp.: 32°C			Ambient Temp.: 38°C			Ambient Temp.: 43°C		
		Capacity(kw)	Power(kw)	Current(A)	Capacity(kw)	Power(kw)	Current(A)	Capacity(kw)	Power(kw)	Current(A)
90HZ	-30	0.98	0.90	2.58	0.92	1.00	2.71	0.88	1.08	2.83
	-25	1.23	0.92	2.60	1.19	1.04	2.76	1.13	1.13	2.90
	-20	1.53	0.97	2.68	1.41	1.10	2.86	1.37	1.18	2.97
	-15	1.92	1.00	2.72	1.67	1.12	2.89	1.57	1.24	3.05
	-10	2.25	1.02	2.74	2.12	1.16	2.94	1.98	1.28	3.12
	-5	2.76	1.04	2.77	2.64	1.19	2.99	2.53	1.31	3.16
	0	3.22	1.05	2.79	3.08	1.20	3.00	2.96	1.35	3.21
	5	3.75	1.05	2.79	3.58	1.22	3.02	3.44	1.35	3.22
	150HZ	-30	1.76	1.38	3.26	1.65	1.53	3.49	1.62	1.70
-25	2.28	1.48	3.41	2.07	1.63	3.64	1.98	1.78	3.87	
-20	2.70	1.53	3.48	2.46	1.71	3.76	2.41	1.88	4.01	
-15	3.25	1.60	3.58	2.96	1.76	3.84	2.86	1.94	4.09	
-10	3.77	1.64	3.63	3.65	1.83	3.93	3.48	2.02	4.22	
-5	4.62	1.68	3.70	4.34	1.88	4.01	4.13	2.08	4.31	
0	5.44	1.76	3.83	5.15	1.93	4.10	4.84	2.20	4.50	
5	6.09	1.74	3.80	5.91	1.97	4.16	5.58	2.25	4.58	
210HZ	-30	2.49	1.97	4.13	2.36	2.17	4.46	2.20	2.35	4.74
	-25	3.31	2.08	4.32	3.01	2.29	4.64	2.59	2.51	4.98
	-20	3.90	2.19	4.47	3.51	2.37	4.78	3.32	2.60	5.12
	-15	4.51	2.26	4.60	4.16	2.50	4.96	4.00	2.71	5.29
	-10	5.34	2.37	4.75	5.11	2.62	5.15	4.62	2.83	5.48
	-5	6.28	2.45	4.87	5.91	2.70	5.27	5.66	2.88	5.55
	0	7.36	2.59	5.12	6.97	2.85	5.52	6.66	3.12	5.96
	5	8.82	2.95	5.68	8.32	3.10	5.90	7.80	3.38	6.36
	270HZ	-30	3.12	2.60	5.11	2.98	2.87	5.55	2.72	3.15
-25	3.83	2.75	5.37	3.58	3.08	5.88	3.32	3.31	6.25	
-20	4.68	2.89	5.58	4.27	3.21	6.09	3.98	3.48	6.51	
-15	5.39	3.04	5.81	5.15	3.39	6.37	4.67	3.73	6.92	
-10	6.48	3.35	6.31	6.04	3.65	6.79	5.79	3.94	7.25	
-5	7.41	3.58	6.65	7.17	3.86	7.11	6.79	4.20	7.67	
0	8.54	3.97	7.29	8.12	4.19	7.64	7.76	4.56	8.21	
5	11.03	4.39	7.96	9.78	4.61	8.29	8.94	4.86	8.69	

List of Capacity

List of Capacity

16. OCU-CR400DQSF Low & medium temperature inverter unit										
R410A										
Frequency	Evaporative Temp. (°C)	Ambient Temp. 32°C			Ambient Temp. 38°C			Ambient Temp. 43°C		
		Capacity(kw)	Power(kw)	Current(A)	Capacity(kw)	Power(kw)	Current(A)	Capacity(kw)	Power(kw)	Current(A)
60HZ	-30	1.09	1.00	2.75	1.02	1.11	2.90	0.97	1.20	3.03
	-25	1.37	1.02	2.78	1.32	1.15	2.96	1.26	1.26	3.11
	-20	1.70	1.08	2.87	1.57	1.22	3.06	1.53	1.32	3.19
	-15	2.13	1.11	2.91	1.86	1.24	3.09	1.74	1.37	3.28
	-10	2.49	1.13	2.93	2.36	1.29	3.16	2.20	1.42	3.35
	-5	3.06	1.15	2.96	2.93	1.32	3.21	2.81	1.45	3.40
	0	3.57	1.16	2.98	3.42	1.34	3.22	3.29	1.50	3.46
	5	4.16	1.17	2.99	3.98	1.35	3.24	3.81	1.50	3.46
100HZ	-30	1.95	1.53	3.51	1.83	1.70	3.76	1.79	1.88	4.04
	-25	2.53	1.64	3.67	2.29	1.81	3.93	2.20	1.98	4.19
	-20	2.99	1.70	3.76	2.74	1.90	4.06	2.67	2.09	4.35
	-15	3.60	1.78	3.86	3.28	1.96	4.15	3.18	2.15	4.43
	-10	4.19	1.82	3.91	4.05	2.03	4.25	3.86	2.24	4.58
	-5	5.13	1.87	3.99	4.82	2.08	4.35	4.59	2.31	4.67
	0	6.04	1.96	4.14	5.72	2.15	4.44	5.38	2.44	4.88
	5	6.75	1.93	4.11	6.56	2.19	4.51	6.19	2.50	4.97
140HZ	-30	2.76	2.19	4.48	2.62	2.41	4.84	2.44	2.61	5.15
	-25	3.67	2.31	4.68	3.34	2.54	5.04	2.88	2.79	5.42
	-20	4.33	2.43	4.85	3.90	2.63	5.19	3.69	2.88	5.57
	-15	5.00	2.51	4.99	4.61	2.77	5.40	4.44	3.00	5.77
	-10	5.92	2.63	5.16	5.67	2.91	5.61	5.13	3.14	5.98
	-5	6.96	2.71	5.30	6.56	3.00	5.74	6.29	3.20	6.05
	0	8.17	2.87	5.57	7.74	3.16	6.02	7.40	3.46	6.51
	5	9.78	3.27	6.19	9.23	3.44	6.44	8.66	3.75	6.94
180HZ	-30	3.46	2.88	5.56	3.31	3.19	6.05	3.02	3.50	6.55
	-25	4.25	3.06	5.84	3.97	3.41	6.41	3.68	3.68	6.82
	-20	5.19	3.20	6.08	4.74	3.56	6.65	4.41	3.86	7.11
	-15	5.98	3.37	6.34	5.71	3.76	6.96	5.18	4.14	7.57
	-10	7.19	3.72	6.89	6.70	4.05	7.42	6.42	4.37	7.93
	-5	8.22	3.97	7.27	7.96	4.28	7.78	7.54	4.66	8.40
	0	9.48	4.40	7.98	9.02	4.65	8.37	8.61	5.06	9.00
	5	12.24	4.87	8.72	10.86	5.12	9.09	9.92	5.39	9.53

17. OCU-CR600DQSF Low & medium temperature inverter unit										
R410A										
Frequency	Evaporative Temp. (°C)	Ambient Temp. 32°C			Ambient Temp. 38°C			Ambient Temp. 43°C		
		Capacity(kw)	Power(kw)	Current(A)	Capacity(kw)	Power(kw)	Current(A)	Capacity(kw)	Power(kw)	Current(A)
60HZ	-30	1.93	1.76	3.10	1.80	1.96	3.36	1.72	2.12	3.59
	-25	2.42	1.80	3.14	2.34	2.03	3.46	2.22	2.22	3.73
	-20	3.01	1.91	3.30	2.77	2.15	3.64	2.70	2.32	3.87
	-15	3.77	1.97	3.38	3.28	2.20	3.70	3.08	2.42	4.02
	-10	4.41	1.99	3.41	4.16	2.28	3.81	3.88	2.52	4.16
	-5	5.41	2.04	3.47	5.17	2.34	3.9	4.97	2.57	4.24
	0	6.30	2.06	3.50	6.05	2.36	3.93	5.81	2.64	4.34
	5	7.36	2.07	3.51	7.03	2.38	3.96	6.74	2.65	4.35
100HZ	-30	3.45	2.71	4.44	3.23	3.01	4.88	3.17	3.33	5.37
	-25	4.47	2.90	4.72	4.05	3.20	5.17	3.89	3.50	5.63
	-20	5.28	3.00	4.87	4.83	3.36	5.41	4.72	3.69	5.91
	-15	6.37	3.14	5.05	5.80	3.46	5.58	5.61	3.80	6.1
	-10	7.40	3.21	5.15	7.15	3.58	5.75	6.82	3.97	6.32
	-5	9.06	3.30	5.29	8.52	3.68	5.91	8.11	4.08	6.49
	0	10.67	3.45	5.54	10.10	3.79	6.08	9.50	4.31	6.86
	5	11.93	3.41	5.49	11.60	3.87	6.2	10.94	4.42	7.02
140HZ	-30	4.88	3.87	6.14	4.62	4.26	6.79	4.31	4.62	7.34
	-25	6.48	4.08	6.50	5.90	4.48	7.13	5.08	4.92	7.81
	-20	7.65	4.29	6.81	6.89	4.65	7.41	6.51	5.09	8.07
	-15	8.83	4.44	7.05	8.15	4.90	7.77	7.84	5.31	8.42
	-10	10.46	4.65	7.35	10.03	5.14	8.14	9.06	5.55	8.79
	-5	12.30	4.80	7.59	11.59	5.29	8.37	11.11	5.65	8.93
	0	14.44	5.08	8.07	13.67	5.58	8.87	13.07	6.12	9.73
	5	17.29	5.78	9.17	16.31	6.08	9.61	15.30	6.63	10.50
180HZ	-30	6.11	5.09	8.06	5.84	5.63	8.93	5.33	6.19	9.80
	-25	7.51	5.40	8.56	7.01	6.03	9.56	6.50	6.50	10.29
	-20	9.17	5.66	8.98	8.38	6.29	9.98	7.80	6.82	10.80
	-15	10.56	5.96	9.43	10.09	6.64	10.53	9.15	7.32	11.61
	-10	12.70	6.57	10.41	11.84	7.16	11.35	11.35	7.72	12.25
	-5	14.53	7.01	11.08	14.06	7.57	11.98	13.32	8.23	13.07
	0	16.75	7.78	12.34	15.93	8.22	13.02	15.22	8.94	14.14
	5	21.62	8.60	13.64	19.18	9.04	14.30	17.53	9.52	15.07

List of Capacity

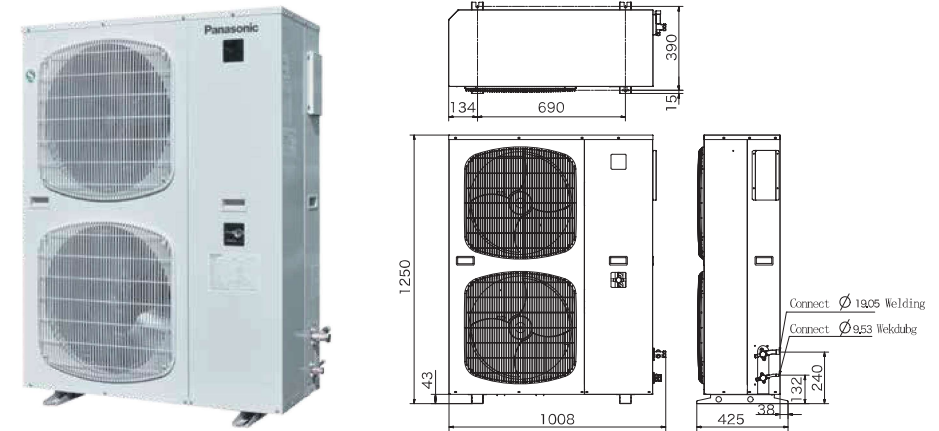
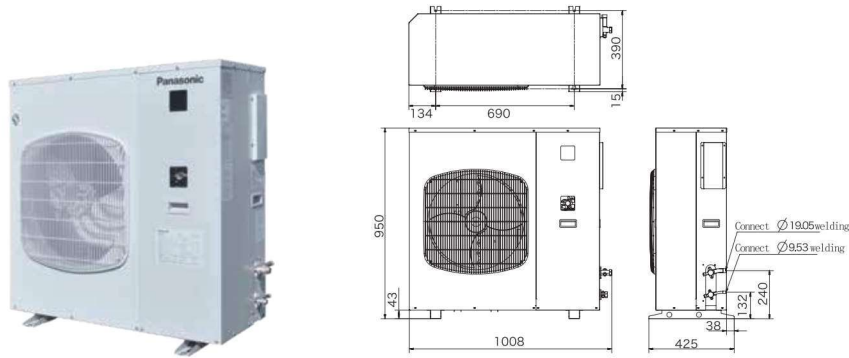
List of Capacity

21、OCU-CS1000VSF Low & medium temperature inverter unit													R410A	
Frequency	Evaporative Temp. (°C)	Condensing Temp.: 35°C			Condensing Temp.: 40°C			Condensing Temp.: 45°C			Condensing Temp.: 50°C			
		Capacity(kw)	Power(kw)	Current(A)	Capacity(kw)	Power(kw)	Current(A)	Capacity(kw)	Power(kw)	Current(A)	Capacity(kw)	Power(kw)	Current(A)	
25Hz	-45	2.61	4.17	20.42	2.45	4.44	21.02	2.27	4.77	21.72	2.11	5.10	22.32	
	-40	2.87	4.14	20.87	2.70	4.44	21.47	2.51	4.79	22.07	2.33	5.18	22.67	
	-30	4.22	4.07	21.82	3.98	4.42	22.32	3.70	4.85	22.92	3.45	5.31	23.52	
	-20	6.65	3.95	22.67	6.27	4.37	23.17	5.86	4.87	23.37	5.47	5.42	24.27	
	-15	8.37	3.85	22.72	7.82	4.33	23.22	7.31	4.88	23.60	6.81	5.49	24.52	
	-10	10.28	3.76	22.77	9.62	4.28	23.27	8.99	4.88	23.77	8.38	5.54	24.70	
50Hz	-5	12.49	3.64	22.85	11.67	4.22	23.35	10.90	4.87	23.85	10.18	5.59	24.95	
	-45	4.89	6.50	21.40	4.44	7.06	22.00	4.02	7.69	22.70	3.64	8.37	23.30	
	-40	5.50	6.72	22.30	5.14	7.29	22.90	4.79	7.92	23.50	4.46	8.62	24.10	
	-30	8.11	7.20	23.80	7.72	7.78	24.30	7.36	8.43	24.90	7.01	9.13	25.50	
	-20	12.51	7.72	25.10	11.89	8.31	25.60	11.30	8.96	26.10	10.73	9.67	26.70	
	-15	15.40	7.99	25.70	14.57	8.59	26.20	13.79	9.25	26.70	13.04	9.96	27.20	
70Hz	-10	18.74	8.28	26.20	17.65	8.88	26.70	16.62	9.54	27.10	15.64	10.25	27.60	
	-5	22.54	8.57	26.70	21.13	9.18	27.10	19.79	9.84	27.50	18.54	10.55	28.00	
	-45	6.69	8.37	22.18	6.03	9.15	22.78	5.42	10.02	23.48	4.87	10.99	24.08	
	-40	7.59	8.79	23.03	7.09	9.57	23.63	6.61	10.43	24.23	6.17	11.37	24.83	
	-30	11.18	9.71	25.28	10.72	10.47	25.78	10.28	11.30	26.38	9.85	12.19	26.98	
	-20	17.15	10.74	27.03	16.38	11.46	27.53	15.65	12.23	28.03	14.94	13.07	28.63	
	-15	21.03	11.30	28.18	19.98	12.00	28.68	18.98	12.74	29.18	18.02	13.53	29.68	
	-10	25.51	11.89	29.13	24.08	12.56	29.63	22.73	13.27	30.03	21.45	14.02	30.53	
	-5	30.58	12.52	30.18	28.69	13.15	30.58	26.90	13.81	30.98	25.24	14.52	31.48	

23、OCU-CS2000VS2F Low & medium temperature inverter unit													R410A	
Frequency	Evaporative Temp. (°C)	Condensing Temp.: 35°C			Condensing Temp.: 40°C			Condensing Temp.: 45°C			Condensing Temp.: 50°C			
		Capacity(kw)	Power(kw)	Current(A)	Capacity(kw)	Power(kw)	Current(A)	Capacity(kw)	Power(kw)	Current(A)	Capacity(kw)	Power(kw)	Current(A)	
25Hz	-45	8.58	11.93	39.92	7.92	12.87	41.52	7.32	13.92	43.12	6.76	15.04	44.82	
	-40	10.20	12.22	40.62	9.47	13.19	42.32	8.79	14.26	43.82	8.13	15.45	45.52	
	-30	15.44	12.82	42.32	14.36	13.85	43.92	13.35	15.02	45.52	12.42	16.28	47.32	
	-20	23.83	13.41	44.12	22.18	14.54	45.82	20.63	15.81	47.42	19.19	17.19	49.22	
	-15	29.53	13.69	44.72	27.47	14.89	46.42	25.55	16.23	48.02	23.74	17.69	49.82	
	-10	36.45	13.99	45.12	33.89	15.24	47.02	31.50	16.65	48.52	29.25	18.18	50.32	
30Hz	-5	44.80	14.25	45.62	41.63	15.59	47.32	38.66	17.08	48.92	35.90	18.69	50.82	
	-45	10.40	13.80	40.90	9.53	14.96	42.50	8.73	16.25	44.10	8.00	17.66	45.80	
	-40	12.31	14.29	42.10	11.44	15.47	43.80	10.63	16.77	45.30	9.86	18.20	47.00	
	-30	18.55	15.33	44.30	17.39	16.54	45.90	16.30	17.89	47.50	15.29	19.34	49.30	
	-20	28.52	16.43	46.60	26.72	17.69	48.30	25.02	19.08	49.90	23.44	20.59	51.70	
	-15	35.22	17.00	47.70	32.93	18.30	49.40	30.79	19.72	51.00	28.77	21.26	52.80	
50Hz	-10	43.28	17.60	48.60	40.38	18.92	50.50	37.67	20.38	52.00	35.12	21.95	53.80	
	-5	52.92	18.20	49.60	49.27	19.56	51.30	45.85	21.05	52.90	42.66	22.66	54.80	
	-45	12.22	15.67	41.88	11.14	17.05	43.48	10.14	18.58	45.08	9.24	20.28	46.78	
	-40	14.42	16.36	43.58	13.41	17.75	45.28	12.47	19.28	46.78	11.59	20.95	48.48	
	-30	21.66	17.84	46.28	20.42	19.23	47.88	19.25	20.76	49.48	18.16	22.40	51.28	
	-20	33.21	19.45	49.08	31.26	20.84	50.78	29.41	22.35	52.38	27.69	23.99	54.18	
70Hz	-15	40.91	20.31	50.68	38.39	21.71	52.38	36.03	23.21	53.98	33.80	24.83	55.78	
	-10	50.11	21.21	52.08	46.87	22.60	53.98	43.84	24.11	55.48	40.99	25.72	57.28	
	-5	61.04	22.15	53.58	56.91	23.53	55.28	53.04	25.02	56.88	49.42	26.63	58.78	

Summary of Medium Temperature Unit Configuration (Single fan Scroll unit)

Summary of Medium Temperature Unit Configuration(Double-fan Scroll unit)

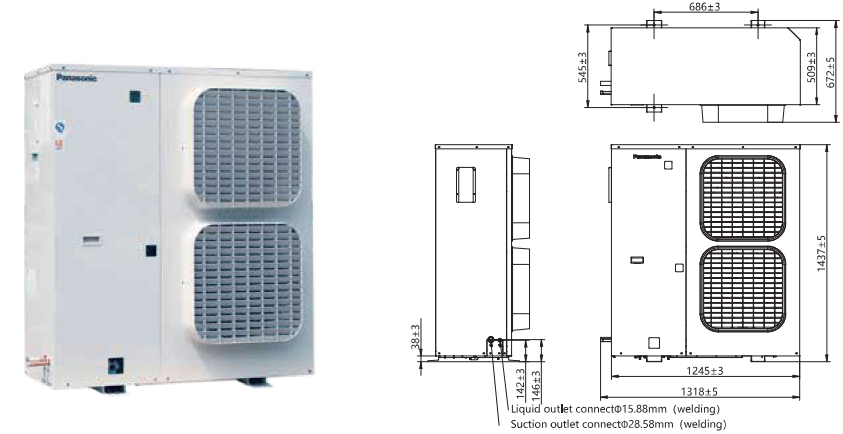
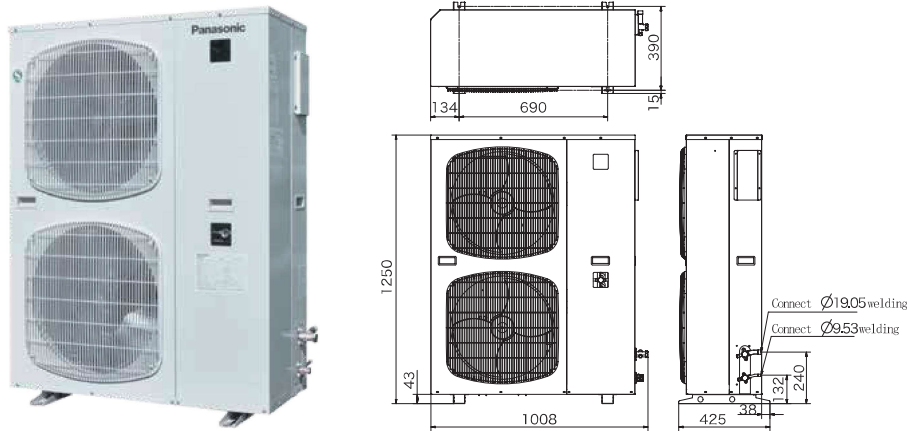


Technical Parameters		R22	R404A
Model		OCU-S400HF	OCU-NS400HF
Nominal Output		3.0kw	
Ambient Temp. Range		-25 ~ +48°C	
Evaporative Temp. Range		-15 ~ +10°C	
Compressor	Cooling Type	Liquid Cooling	Air Cooling
	Oil	SAY-56T 1.7L	FV68S 1.7L
	Crankcase Heater	220V 35W	
Condenser	Structure		Fin and Tube
	Fan	Voltage/Power	220V/70W
		Diameter	460mm
		Quantity	1
Liquid Receiver Volume		3L	
Suction Accumulator Volume		—	
Safety Protecting	Anti-phase Protector	Yes	
	High pressure protection	2.6MPa	2.78MPa
	Exhaust temperature protection	130°C	
	Overcurrent protection	9.5A	
	Fan overload protection	135°C	
	Fuse	5A	
	Motor temperature protection	145°C	
Connection	Gas Inlet	19.05mm	
	Liquid Outlet	9.53mm	
Product Weight		103kg	
Sound Level		54dB	

Technical Parameters		R22		R404A	
Model		OCU-S500HF	OCU-S600HF	OCU-NS500HF	OCU-NS600HF
Nominal Output		3.75kw	4.5kw	3.75kw	4.5kw
Ambient Temp. Range		-25 ~ +48°C			
Evaporative Temp. Range		-15 ~ +10°C			
Compressor	Cooling Type	Liquid Cooling		Air Cooling	
	Oil	SAY-56T 1.7L		FV68S 1.7L	
	Crankcase Heater	220V 35W			
Condenser	Structure		Fin and Tube		
	Fan	Voltage/Power	220V/70W		
		Diameter	460mm		
		Quantity	2		
Liquid Receiver Volume		3L	6L	3L	6L
Suction Accumulator Volume		—			
Safety Protecting	Anti-phase Protector	Yes			
	High pressure protection	2.6MPa		2.78MPa	
	Exhaust temperature protection	130°C			
	Overcurrent protection	11A	13A	11A	13A
	Fan overload protection	135°C			
	Fuse	5A			
	Motor temperature protection	145°C			
Connection	Gas Inlet	19.05mm			
	Liquid Outlet	9.53mm			
Product Weight		122kg	127kg	122kg	127kg
Sound Level		57dB			

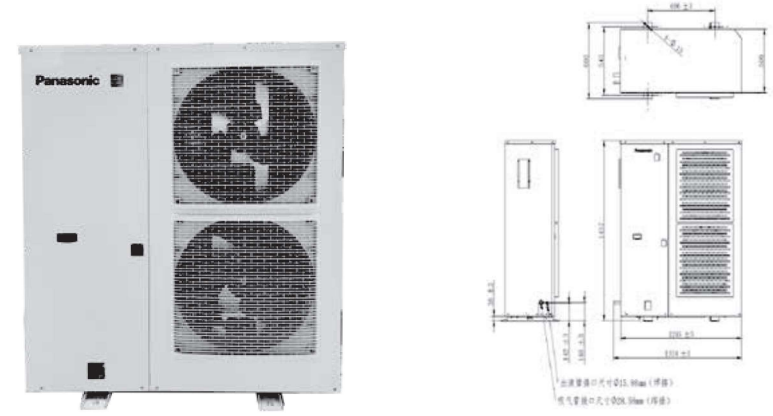
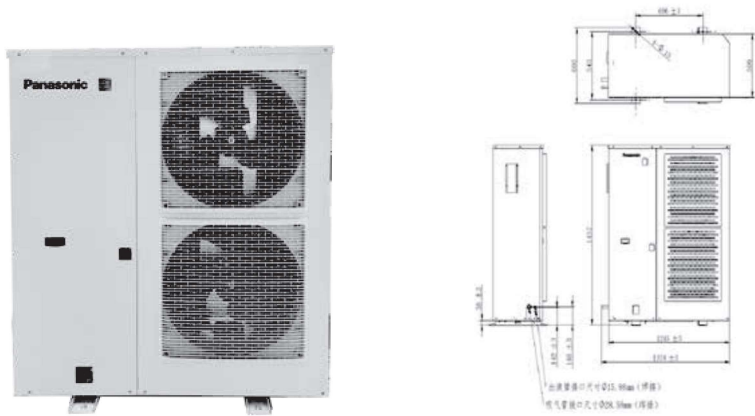
Summary of Medium Temperature Unit Configuration(Double-fan Scroll unit)

Summary of Medium Temperature Unit Configuration(Double-fan Scroll unit)



Technical Parameters		R22	R404A
Model		OCU-S700HF	OCU-NS700HF
Nominal Output		5.25kw	
Ambient Temp. Range		-25 ~ +48°C	
Evaporative Temp. Range		-15 ~ +10°C	
Compressor	Cooling Type	Liquid Cooling	Air Cooling
	Oil	SAY-56T 1.7L	FV68S 1.7L
	Crankcase Heater	220V 35W	
Condenser	Structure		Fin and Tube
	Fan	Voltage/Power	220V/70W
		Diameter	460mm
		Quantity	2
Liquid Receiver Volume		6L	
Suction Accumulator Volume		—	
Safety Protecting	Anti-phase Protector	Yes	
	High pressure protection	2.6MPa	2.78MPa
	Exhaust temperature protection	130°C	
	Overcurrent protection	15A	
	Fan overload protection	135°C	
	Fuse	5A	
	Motor temperature protection	145°C	
Connection	Gas Inlet	19.05mm	
	Liquid Outlet	9.53mm	
Product Weight		131kg	
Sound Level		57dB	

Technical Parameters		R22	R404A
Model		OCU-S800HF	OCU-NS800HF
Nominal Output		6kw	
Ambient Temp. Range		-25 ~ +48°C	
Evaporative Temp. Range		-15 ~ +10°C	
Compressor	Cooling Type	Liquid Cooling	Air Cooling
	Oil	SAY-56T 2.8L	FV68S 2.8L
	Crankcase Heater	220/44W×2	
Condenser	Structure		Fin and Tube
	Fan	Voltage/Power	380V/60W
		Diameter	500mm
		Quantity	2
Liquid Receiver Volume		16L	
Suction Accumulator Volume		3.8L	
Safety Protecting	Anti-phase Protector	Yes	
	High pressure protection	2.7MPa	2.78MPa
	Exhaust temperature protection	130°C	
	Overcurrent protection	24A	
	Fan overload protection	135°C	
	Fuse	5A	
	Motor temperature protection	—	
Connection	Gas Inlet	28.58mm	
	Liquid Outlet	15.88mm	
Product Weight		238kg	
Sound Level		62dB	

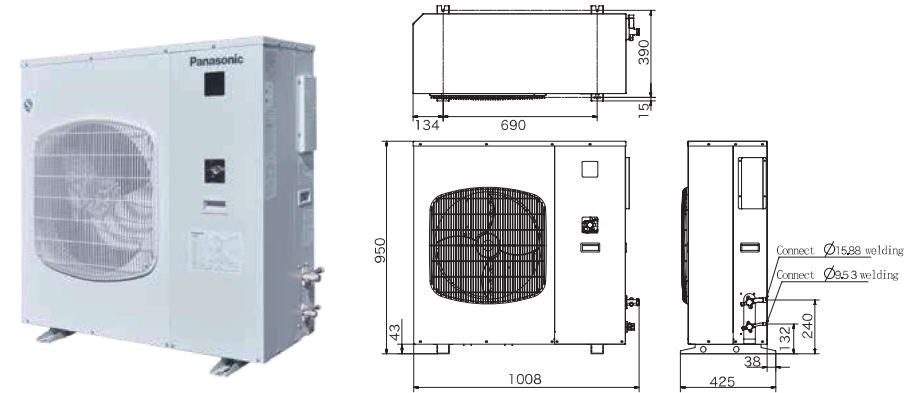
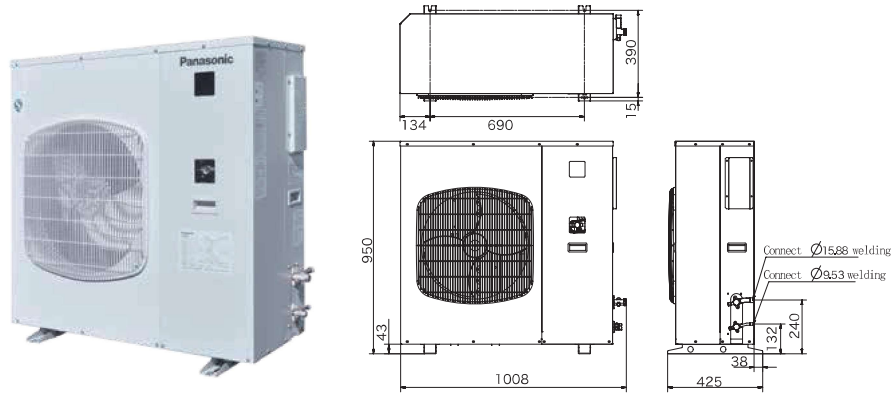


Technical Parameters		R404A	
Model		OCU-NR800DSF-K	OCU-NR800DSF-K
Nominal Output		6kw	
Ambient Temp. Range		-15 ~ +43°C	
Evaporative Temp. Range		-30 ~ +5°C	
Compressor	Cooling Type	Liquid Cooling	
	Oil	FV68S	FV32S
	Crankcase Heater	220V 35W	
Condenser	Structure		Fin and Tube
	Fan	Voltage/Power	120W
		Diameter	528mm
		Quantity	2
Liquid Receiver Volume		16L	
Suction Accumulator Volume		3.8L	
Safety Protecting	Anti-phase Protector	Yes	
	High pressure protection	2.8MPa	
	Exhaust temperature protection	130°C	
	Overcurrent protection	15A	
	Fan overload protection	135°C	
	Fuse	5A	
	Motor temperature protection	145°C	
Connection	Gas Inlet	28.58mm	
	Liquid Outlet	15.88mm	
Product Weight		235kg	
Sound Level		69dB	

Technical Parameters		R404A	
Model		OCU-NS800HF	
Nominal Output		6kw	
Ambient Temp. Range		-25 ~ +48°C	
Evaporative Temp. Range		-40 ~ 5°C	
Compressor	Cooling Type	Liquid Cooling	
	Oil	FV68S 2.5L	
	Crankcase Heater	220/44W×2	
Condenser	Structure		Fin and Tube
	Fan	Voltage/Power	120W
		Diameter	528mm
		Quantity	2
Liquid Receiver Volume		16L	
Suction Accumulator Volume		3.8L	
Safety Protecting	Anti-phase Protector	Yes	
	High pressure protection	2.7MPa	
	Exhaust temperature protection	130°C	
	Overcurrent protection	24A	
	Fan overload protection	135°C	
	Fuse	5A	
	Motor temperature protection	—	
Connection	Gas Inlet	28.58mm	
	Liquid Outlet	15.88mm	
Product Weight		210kg	
Sound Level		66dB(180Hz)、67.5dB(240Hz)	

Summary of Low Temperature Unit Configuration(Single phase Rotary unit)

Summary of Low & Medium Temperature Unit Configuration(Single fan Rotary unit)

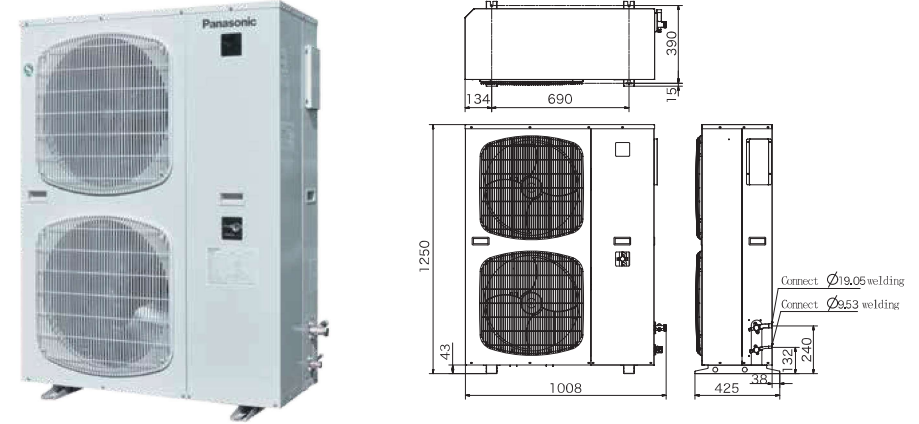
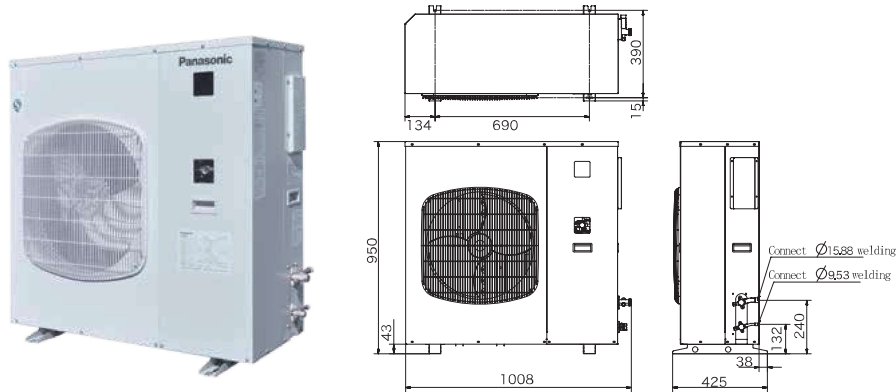


Technical Parameters		R404A	
Model		OCU-NR200SF-D	OCU-NR300SF-D
Nominal Output		1.5kw	2.2kw
Ambient Temp. Range		-25 ~ +48°C	
Evaporative Temp. Range		-40 ~ -5°C	
Compressor	Cooling Type	Liquid Cooling	
	Oil	FV68S 0.9L	
	Crankcase Heater	240V 28W	
Condenser	Structure	Fin and Tube	
	Fan	Voltage/Power	220V/70W
		Diameter	460mm
		Quantity	1
Liquid Receiver Volume		3L	
Suction Accumulator Volume		2L	
Safety Protecting	Anti-phase Protector	No	
	High pressure protection	2.78MPa	
	Exhaust temperature protection	130°C	
	Overcurrent protection	13A	24A
	Fan overload protection	135°C	
	Fuse	5A	
Motor temperature protection	无		
Connection	Gas Inlet	15.88mm	
	Liquid Outlet	9.53mm	
Product Weight		95kg	97kg
Sound Level		54.98dB	57.59dB

Technical Parameters		R22	R404A
Model		OCU-R300SF	OCU-NR300SF
Nominal Output		2.2kw	
Ambient Temp. Range		-25 ~ +48°C	
Evaporative Temp. Range		-40 ~ -5°C	
Compressor	Cooling Type	Liquid Cooling	
	Oil	3GSD-T 0.9L	FV68S 0.9L
	Crankcase Heater	240V 25W	
Condenser	Structure	Fin and Tube	
	Fan	Voltage/Power	220V/70W
		Diameter	460mm
		Quantity	1
Liquid Receiver Volume		3L	
Suction Accumulator Volume		2L	
Safety Protecting	Anti-phase Protector	Yes	
	High pressure protection	2.6MPa	2.78MPa
	Exhaust temperature protection	130°C	
	Overcurrent protection	5.5A	
	Fan overload protection	135°C	
	Fuse	5A	
Motor temperature protection	Yes		
Connection	Gas Inlet	15.88mm	
	Liquid Outlet	9.53mm	
Product Weight		95kg	
Sound Level		54dB	

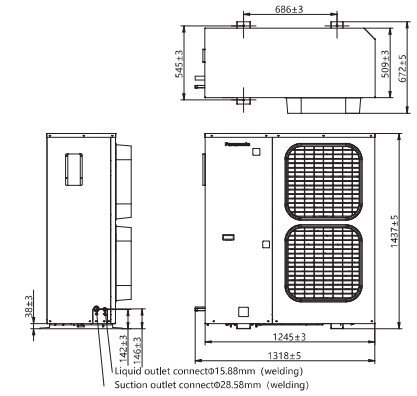
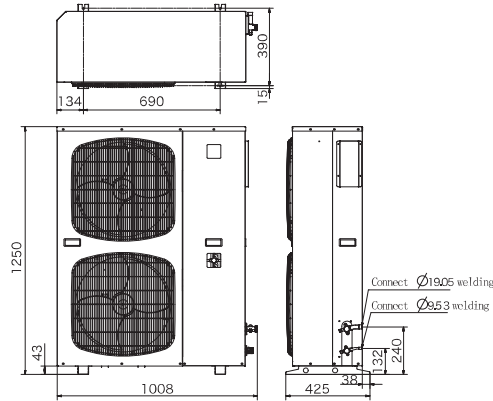
Summary of Low Temperature Unit Configuration(Single fan Scroll unit)

Summary of Low Temperature Unit Configuration(Double fan Scroll unit)



Technical Parameters		R22		R404A		
Model		OCU-S400SF	OCU-S400QSF	OCU-NS400SF	OCU-NS400QSF	
Nominal Output		3.0kw				
Ambient Temp. Range		-25 ~ +48°C				
Evaporative Temp. Range		-40 ~ -15°C				
Compressor	Cooling Type	Liquid Cooling	Air-supply Cooling	Liquid Cooling	Air-supply Cooling	
	Oil	3GSD 1.7L		FV32S 1.7L		
	Crankcase Heater	220V 35W				
Condenser	Structure		Fin and Tube			
	Fan	Voltage/Power		220V/70W		
		Diameter		460mm		
		Quantity		1		
Liquid Receiver Volume		3L				
Suction Accumulator Volume		2L				
Safety Protecting	Anti-phase Protector		Yes			
	High pressure protection		2.6MPa	2.78MPa		
	Exhaust temperature protection		130°C			
	Overcurrent protection		9.5A			
	Fan overload protection		135°C			
	Fuse		5A			
	Motor temperature protection		Yes			
Connection	Gas Inlet		19.05mm			
	Liquid Outlet		9.53mm			
Product Weight		109kg	111kg	109kg	111kg	
Sound Level		54dB				

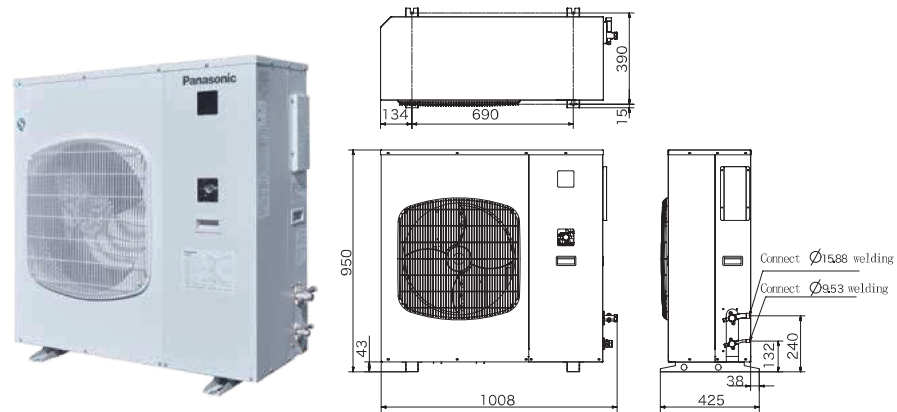
Technical Parameters		R22		R404A		
Model		OCU-S500QSF	OCU-S600QSF	OCU-NS500QSF	OCU-NS600QSF	
Nominal Output		3.75kw	4.5kw	3.75kw	4.5kw	
Ambient Temp. Range		-25 ~ +48°C				
Evaporative Temp. Range		-40 ~ -15°C				
Compressor	Cooling Type	Air-supply Cooling				
	Oil	3GSD 1.7L		FV32S 1.7L		
	Crankcase Heater	220V 35W				
Condenser	Structure		Fin and Tube			
	Fan	Voltage/Power		220V/70W		
		Diameter		460mm		
		Quantity		2		
Liquid Receiver Volume		3L	6L	3L	6L	
Suction Accumulator Volume		3.5L				
Safety Protecting	Anti-phase Protector		Yes			
	High pressure protection		2.6MPa	2.78MPa		
	Exhaust temperature protection		130°C			
	Overcurrent protection		11A	13A	11A	13A
	Fan overload protection		135°C			
	Fuse		5A			
	Motor temperature protection		Yes			
Connection	Gas Inlet		19.05mm			
	Liquid Outlet		9.53mm			
Product Weight		130kg	142kg	130kg	142kg	
Sound Level		57dB				



Technical Parameters		R22		R404A		
Model		OCU-S500SF	OCU-S600SF	OCU-NS500SF	OCU-NS600SF	
Nominal Output		3.75kw	4.5kw	3.75kw	4.5kw	
Ambient Temp. Range		-25 ~ +48°C				
Evaporative Temp. Range		-40 ~ -15°C				
Compressor	Cooling Type	Liquid Cooling				
	Oil	3GSD 1.7L		FV32S 1.7L		
	Crankcase Heater	220V 35W				
Condenser	Structure		Fin and Tube			
	Fan	Voltage/Power		220V/70W		
		Diameter		460mm		
		Quantity		2		
Liquid Receiver Volume		3L	6L	3L	6L	
Suction Accumulator Volume		3.5L				
Safety Protecting	Anti-phase Protector		Yes			
	High pressure protection		2.6MPa		2.78MPa	
	Exhaust temperature protection		130°C			
	Overcurrent protection		11A	13A	11A	13A
	Fan overload protection		135°C			
	Fuse		5A			
	Motor temperature protection		Yes			
Connection	Gas Inlet		19.05mm			
	Liquid Outlet		9.53mm			
Product Weight		128kg	140kg	128kg	140kg	
Sound Level		57dB				

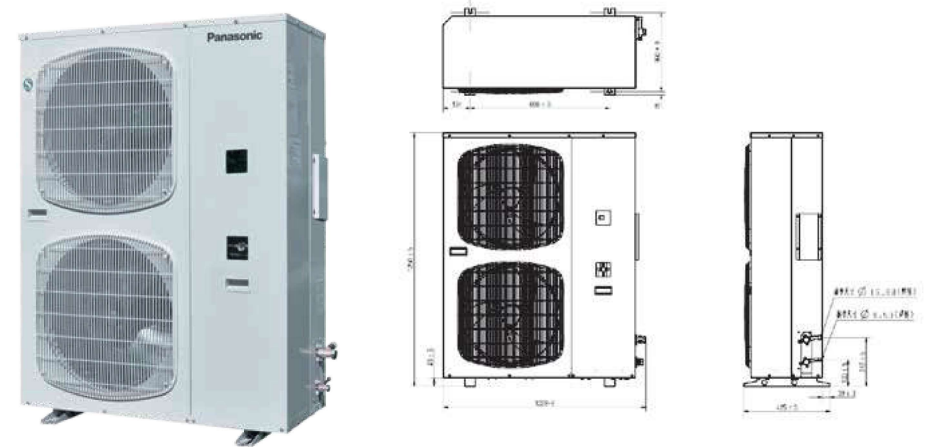
Technical Parameters		R22	R404A	
Model		OCU-S800QSF	OCU-NS800QSF	
Nominal Output		6kw		
Ambient Temp. Range		-25 ~ +48°C		
Evaporative Temp. Range		-40 ~ -5°C		
Compressor	Cooling Type	Air-supply Cooling		
	Oil	3GSD 1.7L	FV32S 1.7L	
	Crankcase Heater	220/44W×2		
Condenser	Structure		Fin and Tube	
	Fan	Voltage/Power		380V/60W
		Diameter		500mm
		Quantity		2
Liquid Receiver Volume		16L		
Suction Accumulator Volume		3.8L		
Safety Protecting	Anti-phase Protector		Yes	
	High pressure protection		2.4MPa	2.7MPa
	Exhaust temperature protection		130°C	
	Overcurrent protection		24A	
	Fan overload protection		135°C	
	Fuse		5A	
	Motor temperature protection		—	
Connection	Gas Inlet		28.58mm	
	Liquid Outlet		15.88mm	
Product Weight		241kg		
Sound Level		62dB		

Summary of DC Inverter Unit Configuration (3HP Unit)



Technical Parameters		R404A	
Model		OCU-NR300DSF	
Nominal Output		2.2kw	
Ambient Temp. Range		-25 ~ +48°C	
Evaporative Temp. Range		-40 ~ -5°C	
Oil		SV68S 0.9L	
Condenser	Structure	Fin and Tube	
	Fan	Voltage/Power	220V/70W
		Diameter	460mm
		Quantity	1
Liquid Receiver Volume		3L	
Suction Accumulator Volume		2L	
Safety Protecting	Anti-phase Protector	Yes	
	High pressure protection	2.78MPa	
	Exhaust temperature protection	125°C	
	Overcurrent protection	6.2A	
	Fan overload protection	135°C	
	Fuse	5A	
Motor temperature protection		—	
Connection	Gas Inlet	15.88mm	
	Liquid Outlet	9.53mm	
Product Weight		100kg	
Sound Level		54dB 50Hz	

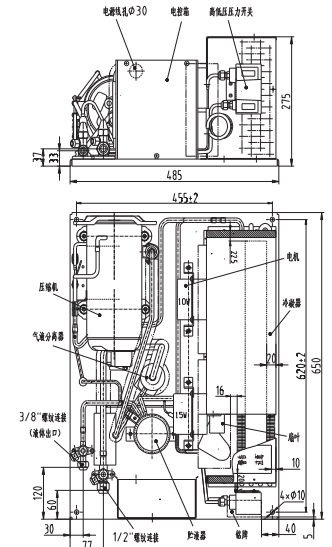
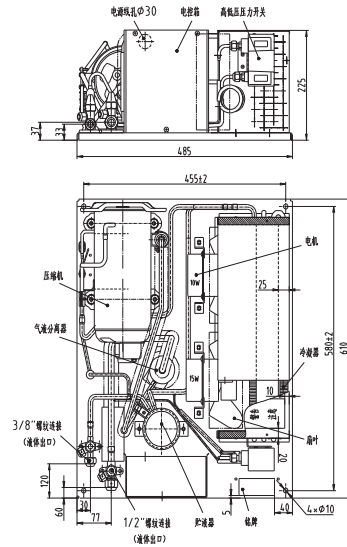
Summary of DC Inverter Unit Configuration (4.5 and 6HP Unit)



Technical Parameters		R404A	
Model		OCU-NR450DSF	OCU-NR600DSF
Nominal Output		3.375kw	4.5kw
Ambient Temp. Range		-25 ~ +48°C	
Evaporative Temp. Range		-40 ~ -5°C	
Oil		FV68S 1.35L	FV68S 1.9L
Condenser	Structure	Fin and Tube	
	Fan	Voltage/Power	220V/70W
		Diameter	460mm
		Quantity	2
Liquid Receiver Volume		6L	
Suction Accumulator Volume		2L	3.8L
Safety Protecting	Anti-phase Protector	—	
	High pressure protection	2.8MPa	
	Exhaust temperature protection	125°C	
	Overcurrent protection	25A	
	Fan overload protection	135°C	
	Fuse	5A	
Motor temperature protection		—	
Connection	Gas Inlet	15.88mm	22.22mm
	Liquid Outlet	9.52mm	12.7mm
Product Weight		120kg	152kg
Sound Level		58dB	60dB(120Hz), 65dB(180Hz)

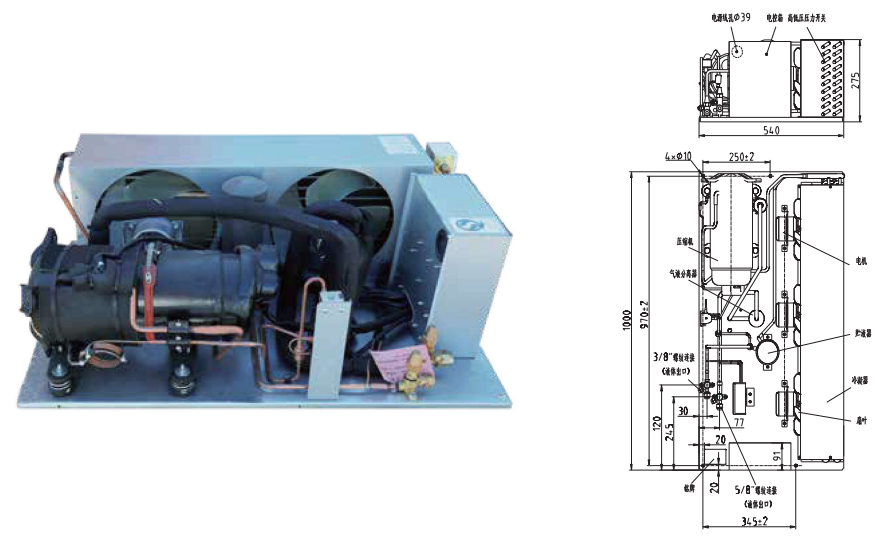
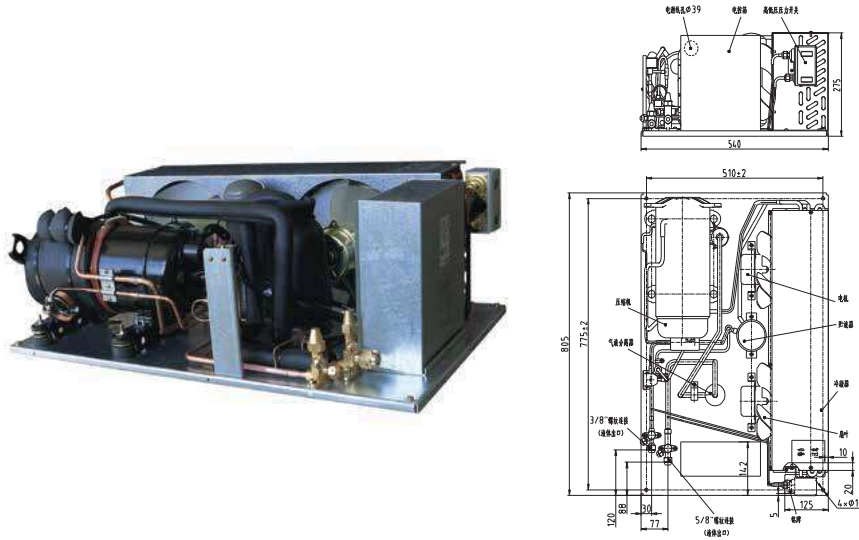
Summary of Built-in Unit Configuration (Low Temp. Single Phase)

Summary of Built-in Unit Configuration (Low Temp. Single Phase)



Technical Parameters			R22	R404A
Model			UF-RH860SFJ	UF-NRH860SFJ
Power Supply			Single phase 220V 50Hz	
Refrigerant			R22	R404A
Evaporative Temp. Range			-40 ~ -5°C	
Ambient Temp. Range			-7 ~ +43°C	
Installation place			Indoor	
Sound Level			51db(A)	
Compressor	Oil	Type	3GSD-T	FV68S
		Charge Amount/set	0.4L	
Condenser	Type		Fin and Tube	
	Air Volume		750	
Liquid Receiver Volume			0.8L	0.74L
Connection	Liquid Outlet		Φ9.53mm	
	Liquid Inlet		—	
	Gas Outlet		—	
	Gas Inlet		Φ12.7mm	
Net Weihgt			32kg	
Wiring Capacity	Power Circuit	Circuit Breaker Capacity (RC)	5A	
		Wiring Diameter	2mm ²	
	Grounding Wire Diameter		2mm ²	

Technical Parameters			R22	R404A
Model			UF-RH1160SFJ	UF-NRH1160SFJ
Power Supply			Single phase 220V 50Hz	
Refrigerant			R22	R404A
Evaporative Temp. Range			-40 ~ -5°C	
Ambient Temp. Range			-7 ~ +43°C	
Installation place			Indoor	
Sound Level			53db(A)	
Compressor	Oil	Type	3GSD-T	FV68S
		Charge Amount/set	0.4L	
Condenser	Type		Fin and Tube	
	Air Volume		910	
Liquid Receiver Volume			0.74L	
Connection	Liquid Outlet		Φ9.53mm	
	Liquid Inlet		—	
	Gas Outlet		—	
	Gas Inlet		Φ12.7mm	
Net Weihgt			34kg	
Wiring Capacity	Power Circuit	Circuit Breaker Capacity (RC)	5A	
		Wiring Diameter	2mm ²	
	Grounding Wire Diameter		2mm ²	



Technical Parameters			R22	R404A
Model			UF-RH1580SFJ	UF-NRH1580SFJ
Power Supply			Three phase 380V 50Hz	
Refrigerant			R22	R404A
Evaporative Temp. Range			-40 ~ -5°C	
Ambient Temp. Range			-7 ~ +43°C	
Installation place			Indoor	
Sound Level			53.4db(A)	54db(A)
Compressor	Oil	Type	3GSD-T	FV68S
		Charge Amount/set	0.9L	
Condenser	Type		Fin and Tube	
	Air Volume		1000	
Liquid Receiver Volume			1.1L	
Connection	Liquid Outlet		Φ9.53mm	
	Liquid Inlet		—	
	Gas Outlet		—	
	Gas Inlet		Φ15.88mm	
Net Weihgt			60.5kg	
Wiring Capacity	Power Circuit	Circuit Breaker Capacity (RC)	5A	
		Wiring Diameter	2mm ²	
	Grounding Wire Diameter		2mm ²	

Technical Parameters			R22
Model			UF-RH2280LFJ
Power Supply			Three phase 380V 50Hz
Refrigerant			R22
Evaporative Temp. Range			-40 ~ -20°C
Ambient Temp. Range			-7 ~ +43°C
Installation place			Indoor
Sound Level			54db(A)
Compressor	Oil	Type	3GSD-T
		Charge Amount/set	0.9L
Condenser	Type		Fin and Tube
	Air Volume		1000
Liquid Receiver Volume			1.1L
Connection	Liquid Outlet		Φ9.53mm
	Liquid Inlet		—
	Gas Outlet		—
	Gas Inlet		Φ15.88mm
Net Weihgt			65kg
Wiring Capacity	Power Circuit	Circuit Breaker Capacity (RC)	5A
		Wiring Diameter	2mm ²
	Grounding Wire Diameter		2mm ²

3HP、4HP Medium and Low Temp. Variable Frequency Outdoor Condensing Unit

6HP Medium and Low Temp. Variable Frequency Outdoor Condensing Unit



Technical Parameters		R410A	
Model		OCU-CR300DQSF	OCU-CR400DQSF
Electric System		3P 380V 50Hz	
Nominal Output		2.2kW	3kW
Ambient Temp. Range		-25 ~ +48°C	
Evaporative Temp. Range		-30 ~ +5°C	
Compressor	Cooling Type	Air-supply Cooling	
	Oil	FV68S 0.5L	FV68S 0.9L
	Crankcase Heater	20W	28W
Condenser	Structure	Pin and Tube	
	Motor Power and Quantity	85W×1	
	Fan Diameter and Quantity	Φ490mm×1	
Liquid Receiver Volume		3L	
Suction Accumulator Volume		2L	
Safety Protecting	Fusible plug	Yes	
	Anti-phase Protector	Yes	
	High pressure protection	3.8MPa	
	Low pressure protection	0.15MPa	
	Exhaust temperature protection	110°C	
	Overcurrent protection	11A	15A
	Fuse	5A	
Connection	Gas Inlet	Φ12.7mm(thread port)	Φ15.88mm(thread port)
	Liquid Outlet	Φ9.52mm(thread port)	
Dimension (L×W×H)		1040mm×450mm×810mm	
Product Weight		71kg	77kg

Technical Parameters		R410A	
Model		OCU-CR600DQSF	
Electric System		3P 380V 50Hz	
Nominal Output		4.5kW	
Ambient Temp. Range		-25 ~ +48°C	
Evaporative Temp. Range		-30 ~ +5°C	
Compressor	Cooling Type	Air-supply Cooling	
	Oil	FV68S 1.3L	
	Crankcase Heater	28W	
Condenser	Structure	Pin and Tube	
	Motor Power and Quantity	85W×2	
	Fan Diameter and Quantity	Φ490mm×2	
Liquid Receiver Volume		6L	
Suction Accumulator Volume		2L	
Safety Protecting	Fusible plug	Yes	
	Anti-phase Protector	Yes	
	High pressure protection	3.8MPa	
	Low pressure protection	0.15MPa	
	Exhaust temperature protection	110°C	
	Overcurrent protection	18A	
	Fuse	5A	
Connection	Gas Inlet	Φ19.05mm(Thread port)	
	Liquid Outlet	Φ9.52mm(Thread port)	
Dimension (L×W×H)		1040mm×450mm×1260mm	
Product Weight		92 kg	

Note: The outermost dimension includes the foundation and valve

Note: The weight is a provisional estimate

10、 15HP Medium and Low Temp. Variable Frequency Outdoor Condensing Unit



Technical Parameters			R410A		
Item	Unit	Specification			
Model		OCU-CS1000VSF		OCU-CS1500VSF	
Code		—			
Product Standards		GB/T 21363-2018			
Power Source	Power Circuit	3PH.380V.60Hz			
	Operating Circuit	1PH.220V.60Hz			
Scope	Installation place	Outdoor			
	Refrigerant	R410A			
	Evaporative Temp. Range	°C	-45 ~ -5		
	Ambient Temp. Range	°C	-7 ~ 43		
	Voltage variation	Power supply	%	±10	
		Operating supply	%	±10	
	Voltage Imbalance Rate	%	≤2		
Performance Parameter	Nominal Output	kW	7.4	11	
	Nominal Capacity※1	kW	25.4	28.88	
	Input Power※1	kW	13.01	14.83	
	COP※1	kW/kW	1.95		
	Operating Current※2	A	30.00	31.50	
Maximum Load Current※3	A	32.00	35.00		
Compressor	Model & Quantity		5CC120NA03 × 1台	5CC120NA03 × 1台	
	Displacement/set	cm ³ /rev	118		
	Cooling Type		Liquid Cooling		
Accessory	Vessel	Oil	Type	FV32S	
		Charge Amount	L	2.5×1	
Dimension	Vessel	Liquid Receiver Volume	L	25	
		Length	mm	1030	
		Width	mm	1020	
		Height	mm	1910	
Safety Protecting		--	Protection for High exhaust temperature, overcurrent , high-voltage , temperature and pressure sensor fault , frequency converter fault , communication fault , input and output phase loss , fan driver alarm		
Product Weight (excluding refrigerant)		kg	385	425	
Connection	Liquid Outlet	mm	Φ15.88(Welding joint)		
		Gas Inlet	mm	Φ34.93(Welding joint)	

※1: Nominal operating conditions: evaporation temperature -7 °C, condensation temperature 45 °C, suction temperature 18 °C, speed 70rps.

※2: Operating conditions: evaporation temperature -7 °C, condensation temperature 45 °C, suction temperature 18 °C, speed 70rps.

※3: Maximum load conditions: evaporation temperature -5 °C, condensation temperature 50 °C, suction temperature 18 °C, speed 70rps.

20HP Medium and Low Temp. Variable Frequency Outdoor Condensing Unit



Technical Parameters			R410A		
Item	Unit	Specification			
Model		OCU-CS2000VS2F			
Code		—			
Product Standards		GB/T 21363-2018			
Power Source	Power Circuit	3PH.380V.60Hz			
	Operating Circuit	1PH.220V.60Hz			
Scope	Installation place	Outdoor			
	Refrigerant	R410A			
	Evaporative Temp. Range	°C	-45 ~ -5		
	Ambient Temp. Range	°C	-7 ~ 43		
	Voltage variation	Power supply	%	±10	
		Operating supply	%	±10	
	Voltage Imbalance Rate	%	≤2		
Performance Parameter	Nominal Output	kW	14.7	14.7	
	Nominal Capacity※1	kW	52.8	52.8	
	Input Power※1	kW	25.19	25.19	
	COP※1	kW/kW	2.10		
	Operating Current※2	A	55.00	55.00	
Maximum Load Current※3	A	69.00	69.00		
Compressor	Model & Quantity		5CC120NA03× 1 + SCC120WA03× 1		
	Displacement/set	cm ³ /rev	239		
	Cooling Type		Liquid Cooling		
Accessory	Vessel	Oil	Type	FV32S	
		Charge Amount	L	2.5×2	
Dimension	Vessel	Liquid Receiver Volume	L	50	
		Length	mm	1920	
		Width	mm	1035	
		Height	mm	1925	
Safety Protecting		--	Protection for High exhaust temperature, overcurrent , high-voltage , temperature and pressure sensor fault , frequency converter fault , communication fault , input and output phase loss , fan driver alarm		
Product Weight (excluding refrigerant)		kg	695		
Connection	Liquid Outlet	mm	Φ22.22(Welding joint)		
		Gas Inlet	mm	Φ41.28 (Welding joint)	

※1: Nominal operating conditions: evaporation temperature -7 °C, condensation temperature 45 °C, suction temperature 18 °C, speed 70rps.

※2: Operating conditions: evaporation temperature -7 °C, condensation temperature 45 °C, suction temperature 18 °C, speed 70rps.

※3: Maximum load conditions: evaporation temperature -5 °C, condensation temperature 50 °C, suction temperature 18 °C, speed 80rps.